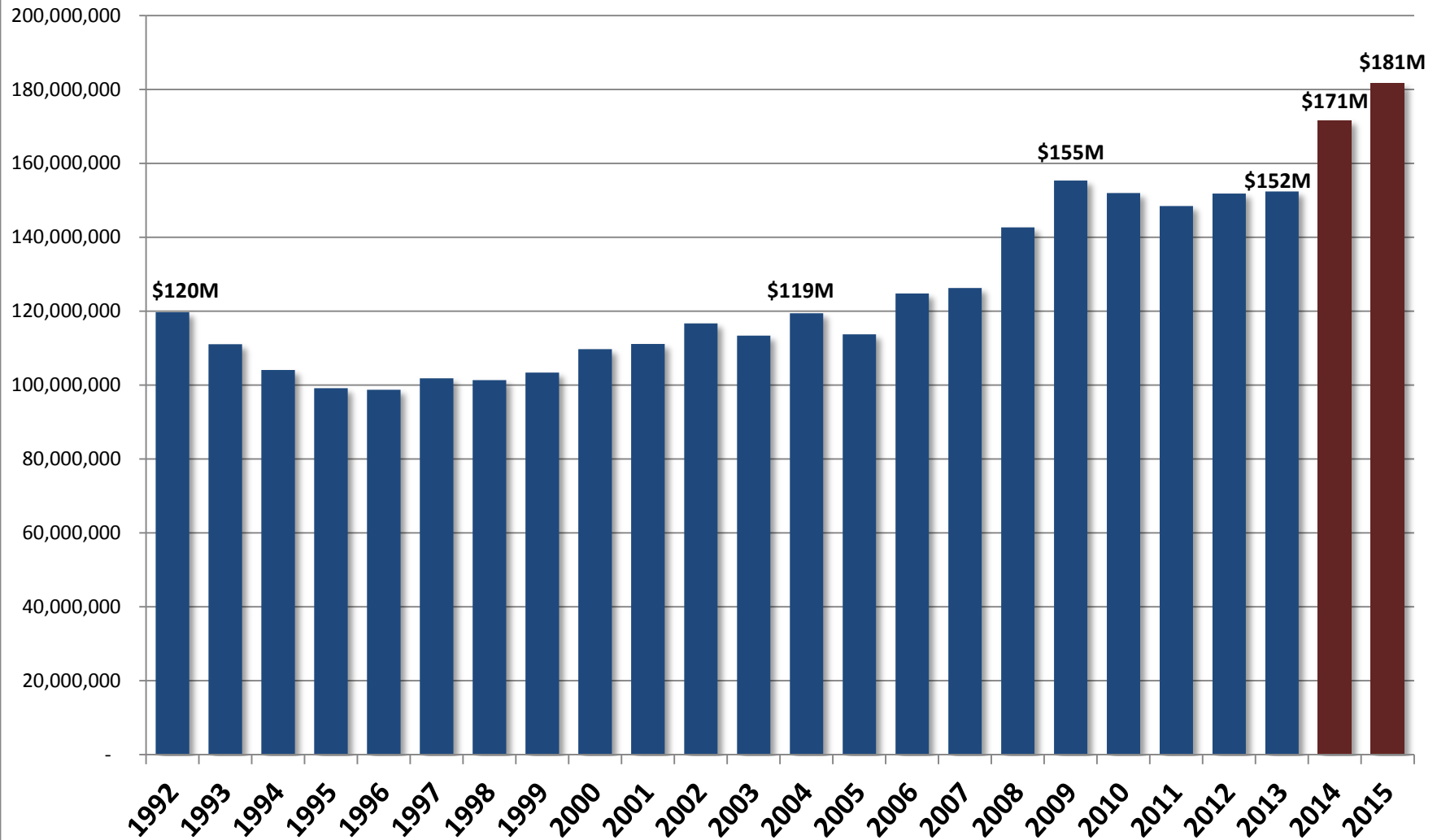


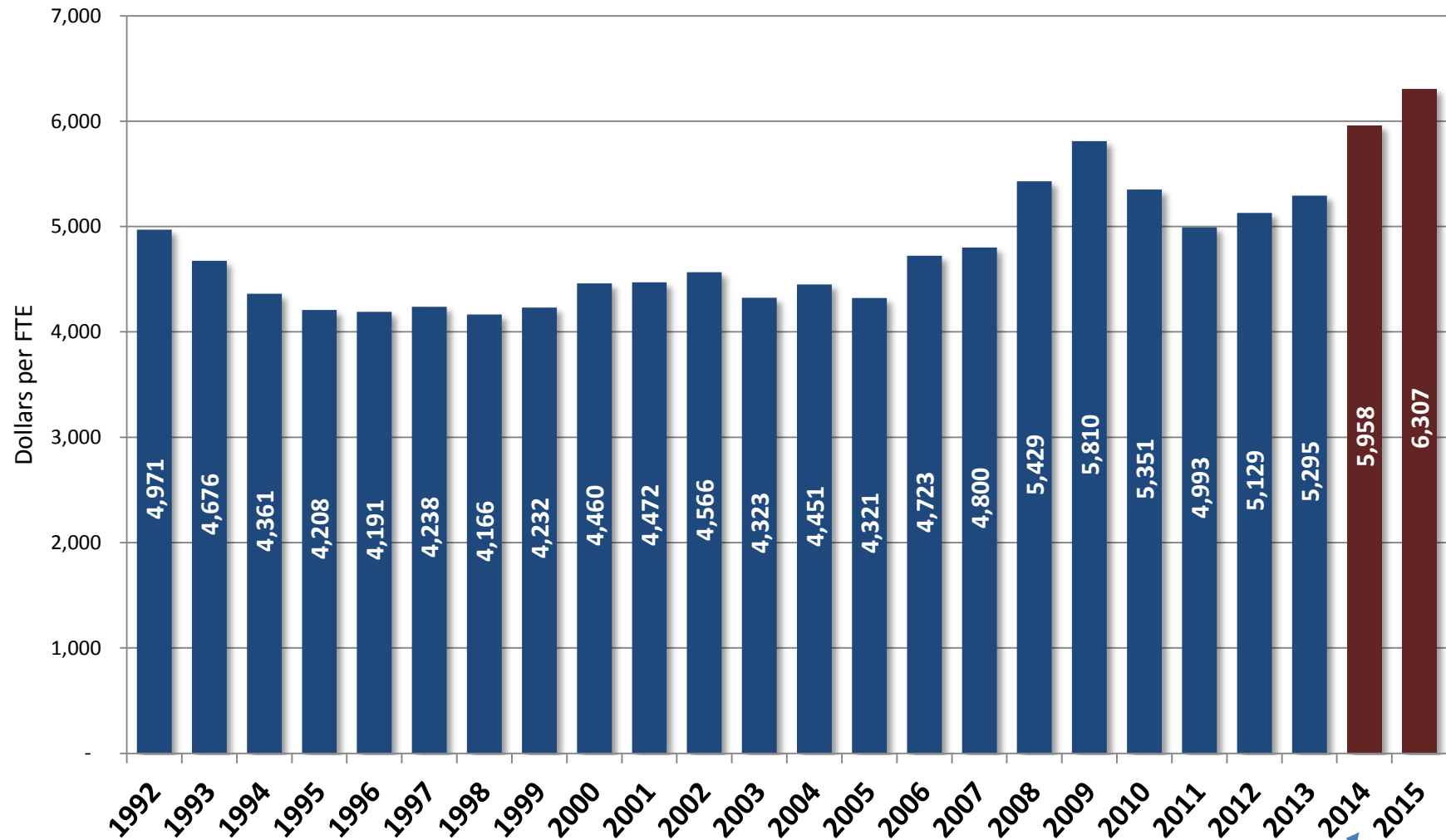
## Total State Appropriations -- Ed Units Only

source: Official LFD Historical Funding Spreadsheet, FY 14/15 calculations done by OCHE



# State Appropriations per Resident Student FTE -- Ed Units Only

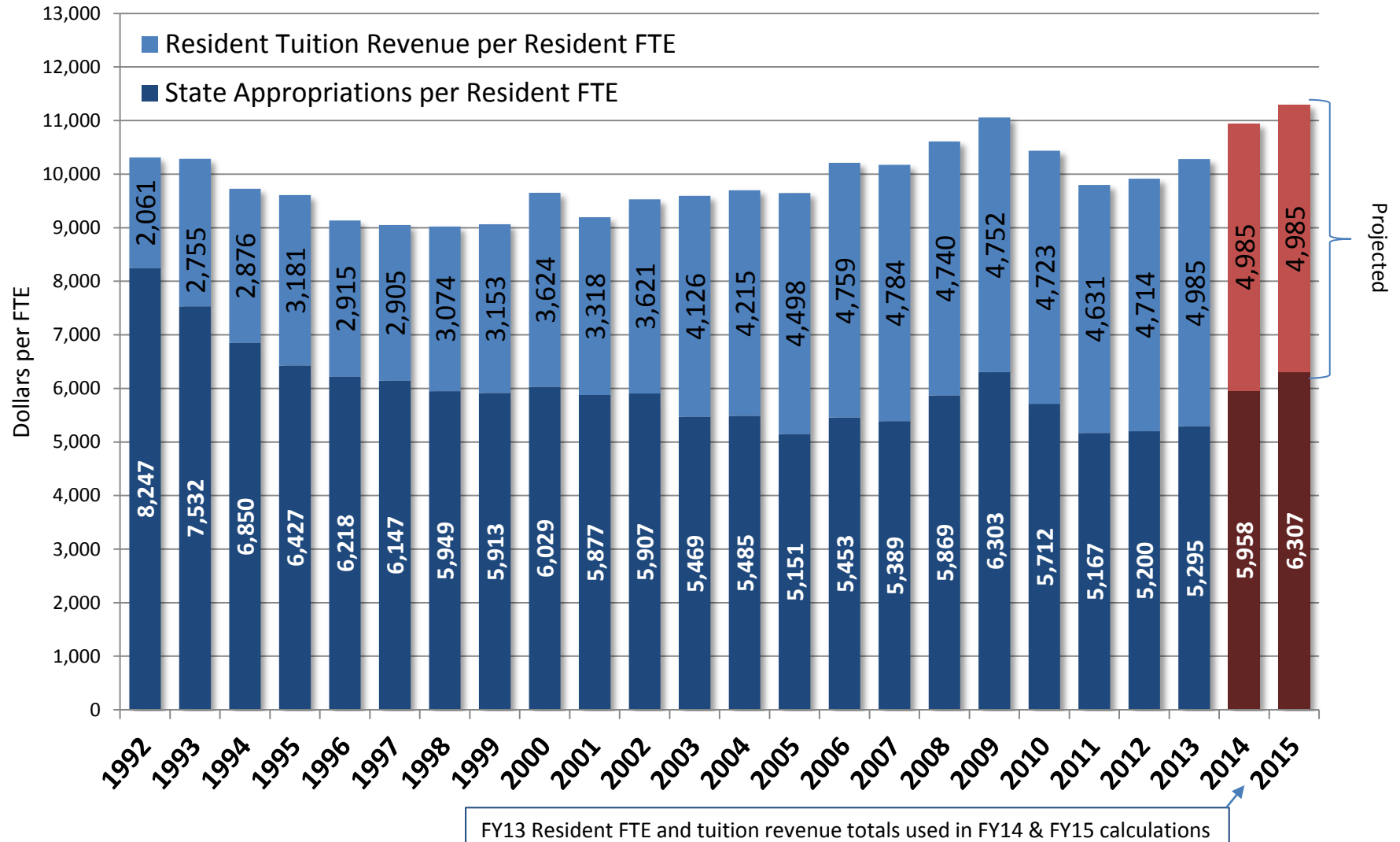
source: Official LFD Historical Funding Spreadsheet & MSU Enrollment Report, FY 14/15 calculations done by OCHE



FY13 Resident FTE totals used in FY14 & FY15 calculations

## Resident Student Educational Revenue per Resident FTE -- Ed Units Only (2013 constant dollars)

source: OCHE Historical Finance Records & MSU Enrollment Report, FY 14/15 calculations done by OCHE



# Total Educational Revenue per Student FTE -- Ed Units Only (2013 constant dollars)

source: Official LFD Historical Funding Spreadsheet & MSU Enrollment Report, calculations done by OCHE

