

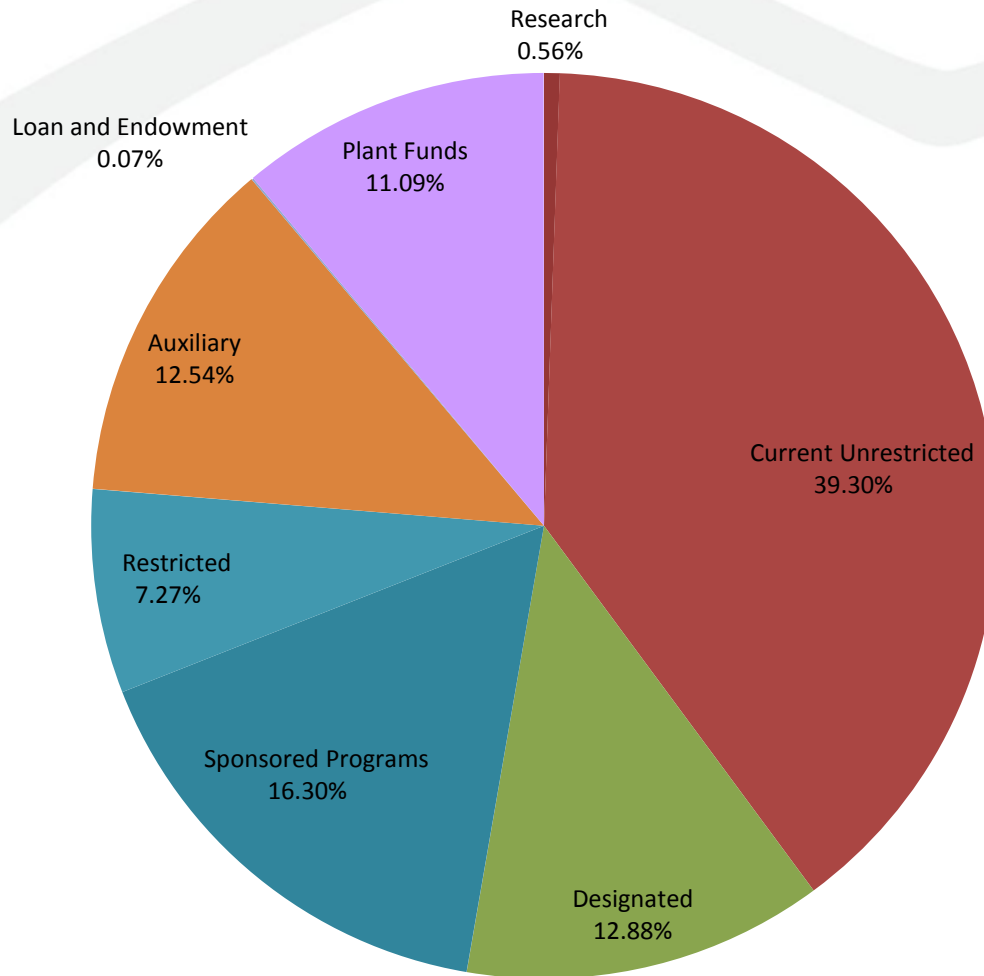
University of Montana Research



Royce C. Engstrom
President, University of Montana

University of Montana

All Fund Sources - 2015



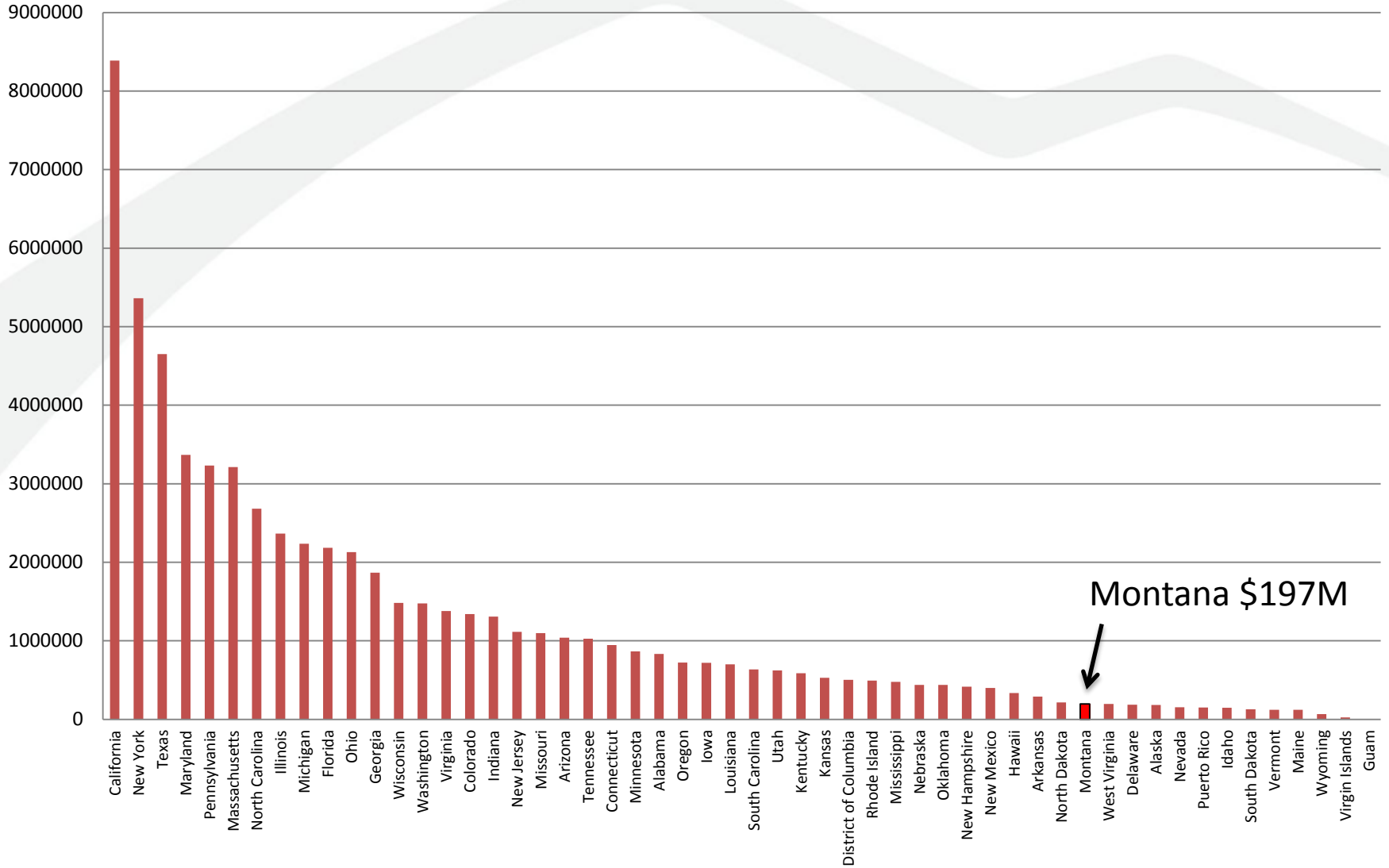
Research in UM Affiliation

Institution	Institutional Official	Total Research Expenditures	Federal Research Expenditures
UM - Missoula	Scott Whittenburg Vice President for Research and Creative Scholarship	\$60.2M*	\$34.0M*
Montana Tech	Bev Hartline Vice Chancellor for Research and Dean of the Graduate School	\$11M*	\$3.5M*
UM-Western	Anneliese A. Ripley Interim Assistant Provost and Director of Research	\$153k	\$139k
Helena College	Daniel Bingham Dean and CEO	\$1.6M#	\$1.6M#

*NSF Higher Education Research and Development (HERD) Survey, 2013

TAAACCT Grant, FY2014

Total R&D FY2012



Range of Research Activities

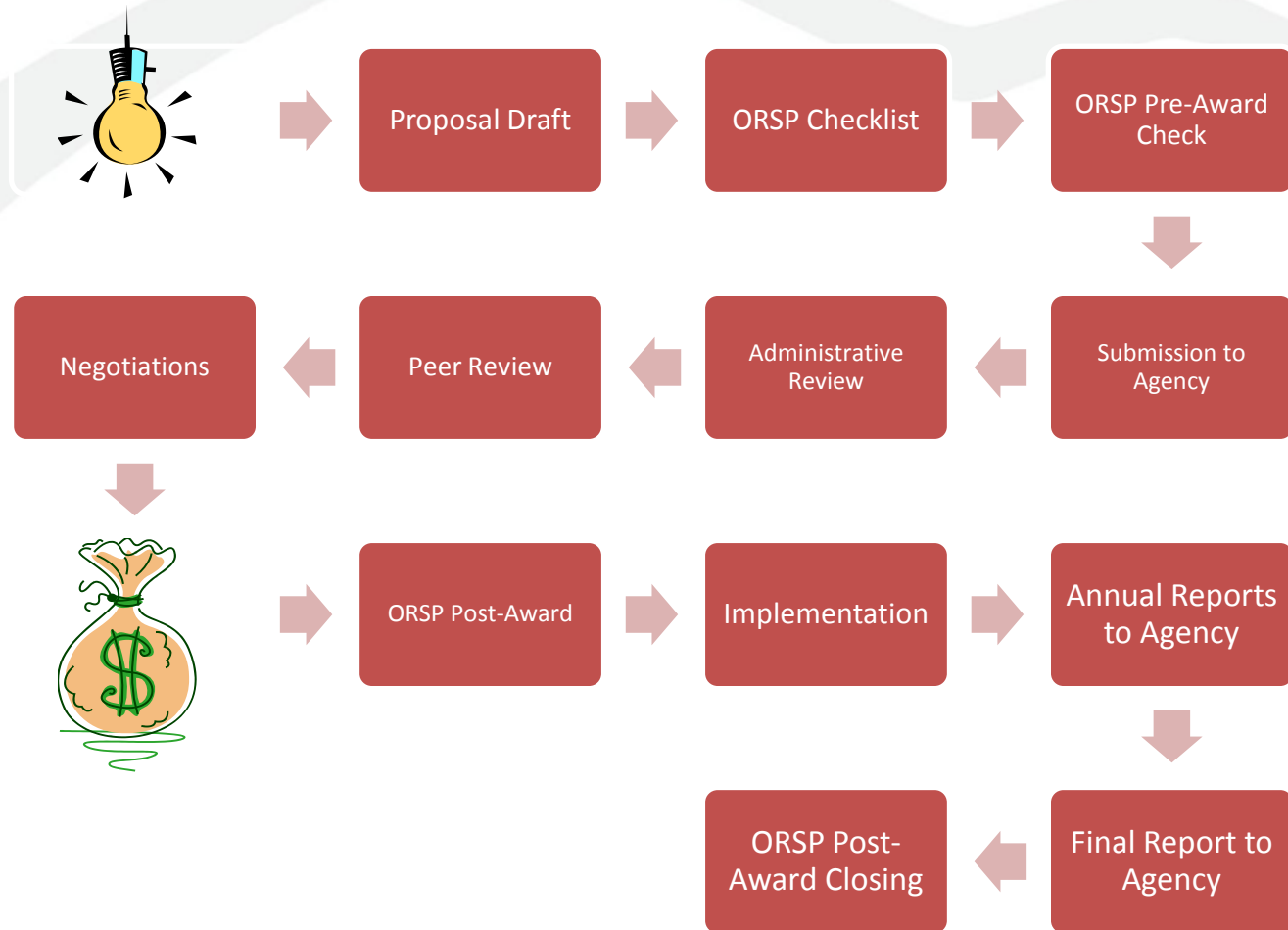
Individual Investigator - “Participant Protection in Rural America”, Ann Freeman Cook, Department of Psychology and Director, National Rural Bioethics Project, NIH/NHGRI, \$744k, FY2010-2015

Education – “Bringing Research into the Classroom (BRIC): A PARTNERSHIP FOR RESEARCH AND EDUCATION IN THE MONTANA PUBLIC SCHOOLS.” Dr. Marisa Pedulla, Montana Tech Department of Biology, and Rayelynn Connoles, director of Cfwep.Org, NIH-SEPA, \$1.25M, FY2014

Outreach – “Defense Critical Language and Culture Program”, Major General (USAF, Ret.) Don Loranger, Maureen and Mike Mansfield Center, DoD, \$2.9M, FY2014

Capacity Building – “Institute on Ecosystems”, Ray Callaway, PD, Ric Hauer (UM) and Kathy Whitlock (MSU) co-Directors, National Science Foundation EPSCoR Track 1, \$20M (NSF portion), FY2011-2016

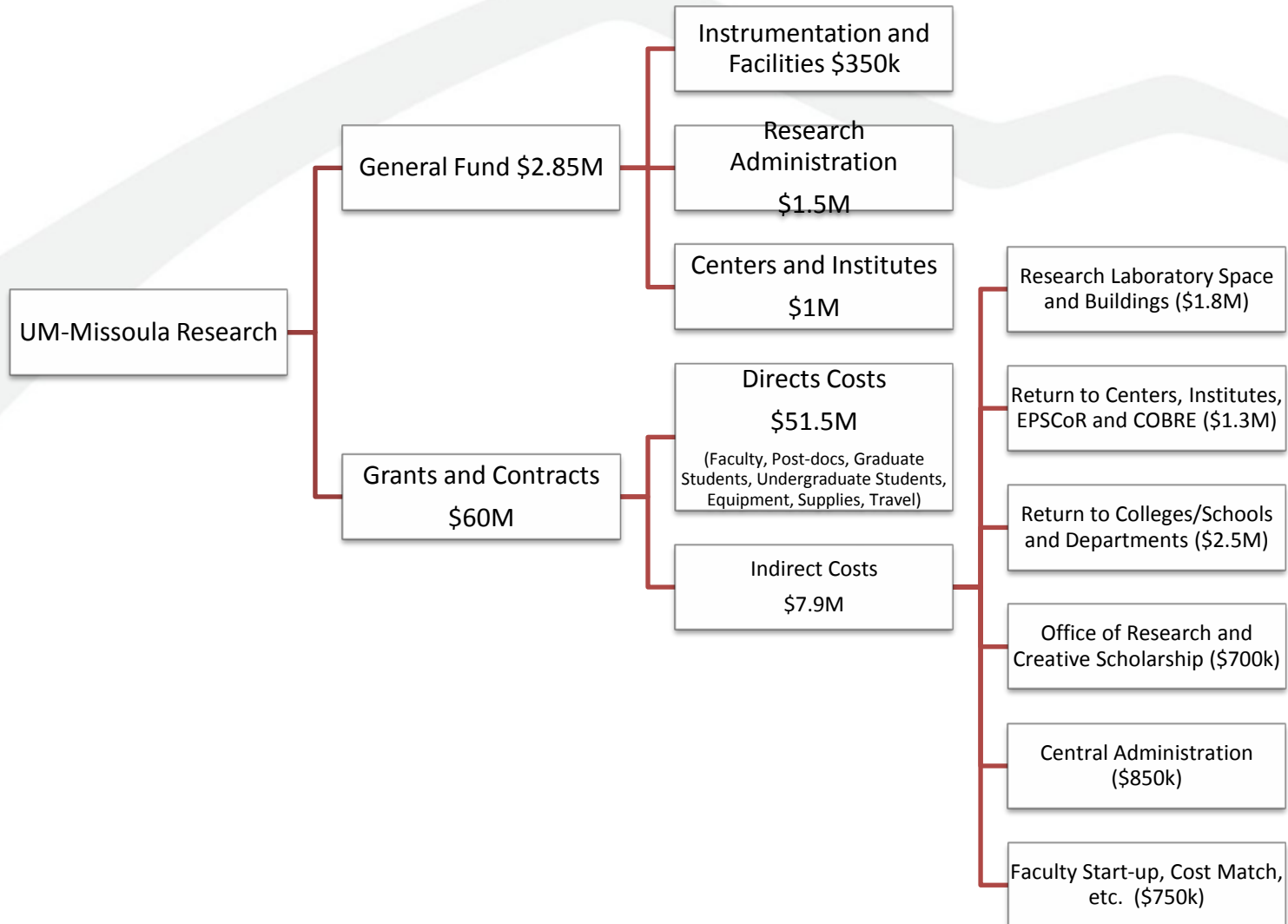
Steps in Obtaining & Managing a Research Award

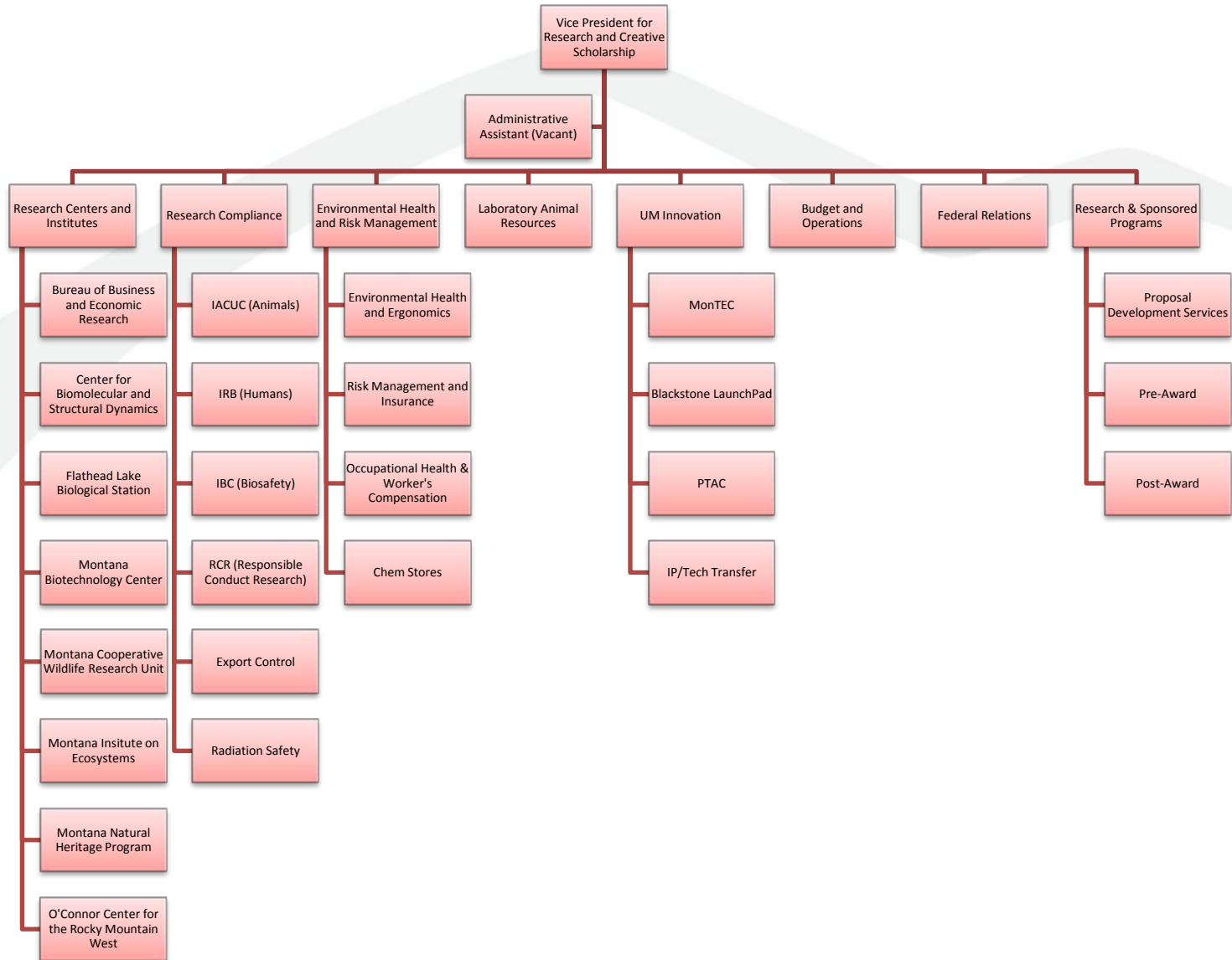


F&A or Indirect/Overhead Costs

- Facilities & Administration (F&A) costs - incurred for common or joint objectives and cannot be readily and specifically identified with a particular sponsored project
- The F&A rate is negotiated by the University every three to five years with the U.S. Department of Health and Human Services, Division of Cost Allocation.
- UM's rates:
 - Federal Organized Research 45%,
 - Instruction 57%,
 - Other Sponsored Activities 33%

Follow the Money





Vice President for Research and Creative Scholarship

Administrative Assistant (Vacant)

Research Centers and Institutes

Research Compliance

Environmental Health and Risk Management

Laboratory Animal Resources

UM Innovation

Budget and Operations

Federal Relations

Research & Sponsored Programs

Bureau of Business and Economic Research

Center for Biomolecular and Structural Dynamics

Flathead Lake Biological Station

Montana Biotechnology Center

Montana Cooperative Wildlife Research Unit

Montana Insitute on Ecosystems

Montana Natural Heritage Program

O'Connor Center for the Rocky Mountain West

IACUC (Animals)

IRB (Humans)

IBC (Biosafety)

RCR (Responsible Conduct Research)

Export Control

Radiation Safety

Environmental Health and Ergonomics

Risk Management and Insurance

Occupational Health & Worker's Compensation

Chem Stores

MonTEC

Blackstone LaunchPad

PTAC

IP/Tech Transfer

Proposal Development Services

Pre-Award

Post-Award

UM-Missoula Economic Development



AIM GeoAnalytics
Bee Alert Technology
Purity Systems, Inc
Visual Learning Systems
Endobiologics
AquilaVision
TerraEchos
Astarna, Inc
Transsynaptic Technologies

GT NeuroPharma
Sinapis Pharma
Ateris Technologies LLC
Big Sky Biotechnologies, LLC
International Heart Institute of
Montana
Montana Medical Research, LLC
Montana Microbial Products, LLC
Montana Neuroscience Institute
Foundation
MorTan, Inc.