



Mission Review
Board of Regents ~ March 2015

Two-Year Education in Montana

MUS

- Bitterroot College
- City College MSU Billings
- Gallatin College MSU
- Great Falls College MSU
- Highlands Tech of Montana Tech
- Helena College UM
- Missoula College UM

Tribal Colleges

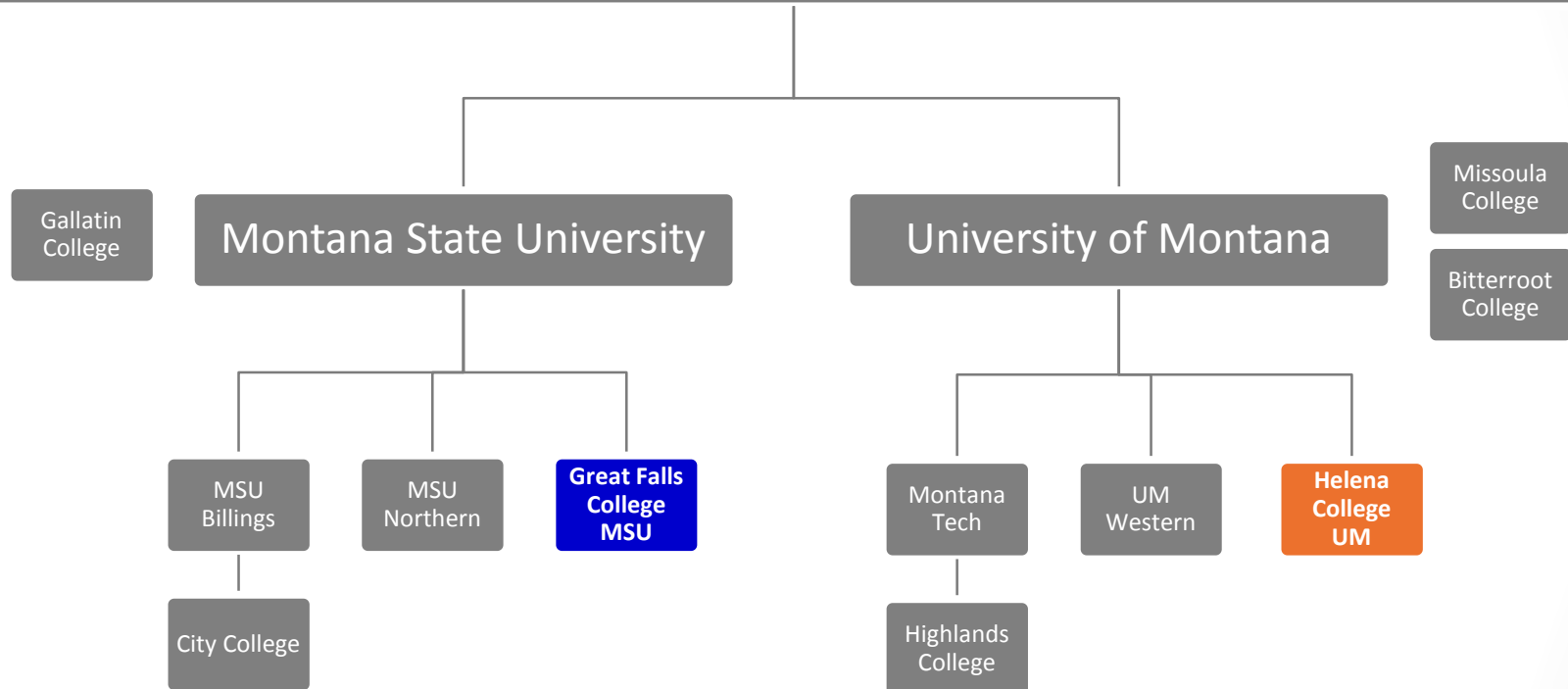
- Aaniih Nakoda College
- Blackfeet Community College
- Chief Dull Knife College
- Fort Peck Community College
- Salish Kootenai College
- Stone Child College

Community Colleges

- Dawson Community College
- Flathead Valley Community College
- Miles Community College



Montana University System





Our Students

- **43%** Male / **57%** Female
- **39%** have children living at home
- **77%** work at least part-time
- **27** average age



Our Students

- **14** average class size
- **12:1** student to faculty ratio
- **77%** of enrolled credit hours are in face to face courses
- **10%** of enrolled credit hours are in hybrid courses
- **13%** of enrolled credit hours are in online courses
- **4%** of students enrolled wholly online



Our Staff

- **55** Full-time administrative and support staff
- **5** Part-time administrative and support staff
- **36** Full-time faculty
- **3** Part-time faculty
- **127** Adjunct faculty

\$7,087,162
total FY14
payroll



Available Degrees

- 2 Transfer degrees, Associate of Arts and Associate of Science
- 12 signed articulation agreements for Bachelors degrees, 8 of which can be completed in Helena or online
- 10 C.A.S. degrees for direct entry into high-demand career fields
- 12 A.A.S. degrees for higher-wage entry into high-demand career fields
- 11 Certificate of Technical Studies/Professional Certificates for career enhancement/career switch
- 4 agreements offering credit-bearing options for customized training

Online Courses and Degrees

Bachelor Degrees available completely online with the exception of the lab science requirement which is completed at Helena College

- **Bachelor of Social Work** w/ UM
- **Bachelor of Criminal Justice** w/ Northern
- **Bachelor of Health Administration** w/ MSU Billings
- **Bachelor of Business Administration** w/ MSU Billings

20

online-only courses
available in the
Spring 2015





Early College

- **367 Dual Credit students** in Fall 2014
- **221 Dual Credit students** in Spring 2015

AY 2014-15

- **588 Dual Credit students**
(annual duplicated headcount- total from each semester, not unique students)
- **11 partner high schools**
- **26 Dual Credit course offerings**
(unique courses, not total courses)
- **77 enrolled in CTE courses**
(annual duplicated headcount)



Student Scholarships

in AY 2013-14

229 students

received grants and scholarships from state,
local and institutional sources totaling over

\$500,000

Community & Business Connections

- **Campus Advisory Council** of 12 Community Leaders
- **13 Program Advisory Committees** including a total of 72 business representatives
- **12 total students**, 4 for credit and 8 non-credit, travelling to China to Study Abroad in May 2015
- **12 customized trainings** conducted during AY 2014-15 thus far for large and small businesses and various state government agencies
- **60 young women** ages 14-18 engaged in STEM and Trades career exploration on November 7, 2014



Economic Impact

| | |
|---|-----------------------|
| Salaries / Wages paid | \$8.4 million |
| College purchases in the local economy | \$1.4 million |
| Student spending in the local economy | \$8.3 million |
| Total Effect | \$18.1 million |

Mission

Helena College University of Montana, a comprehensive two-year college, provides access to and support of lifelong educational opportunities to our diverse community.



Vision Statement

Helena College will be recognized as a responsive regional provider of comprehensive educational opportunities, as a partner in economic and community development, and as a diverse and accessible community of learners. Helena College will promote excellence in education, maintain fiscal and operational integrity; and cultivate an environment of fellowship, inclusiveness, and respect.



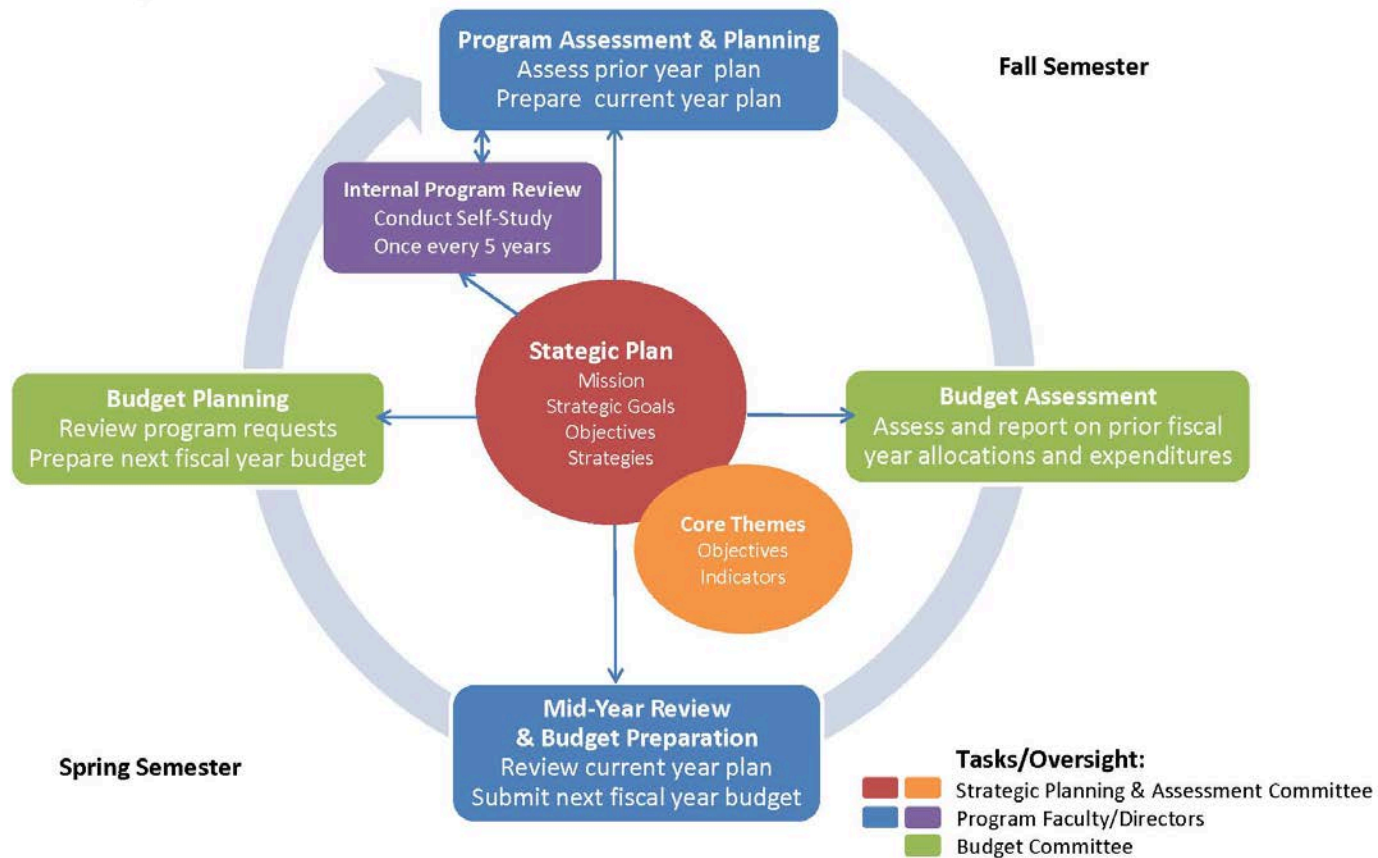
Core Themes

1. Provide access and support; high quality educational activities and programs important to achieving student success.
2. Demonstrate academic excellence; a high degree of integrity, quality and reliability in all academic and non-academic programming.
3. Strengthen the community; meeting regional workforce needs, strengthening employee knowledge and skills, providing a bridge to additional educational attainment through advanced degrees, and serving as a facilitator for cultural enrichment.

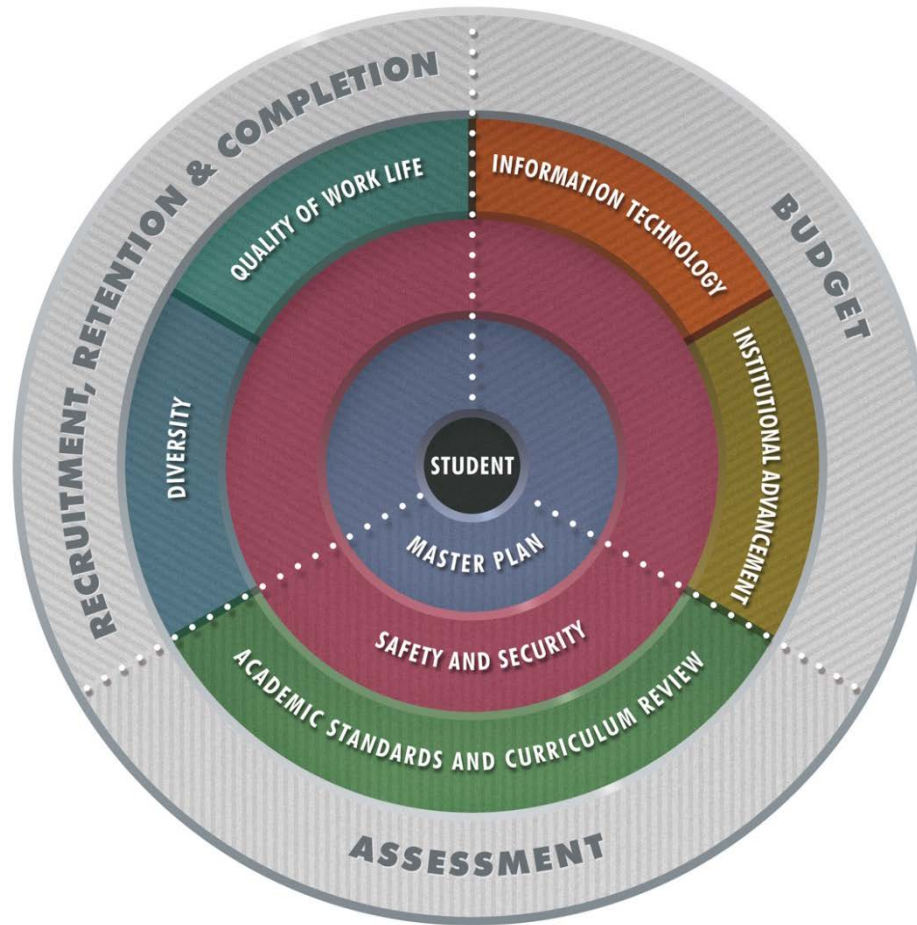
Strategic Plan Goals

1. Partner for student success
2. Integrate planning and assessment
3. Attain excellence
4. Support the community
5. Advance the institution
6. Develop resources

Assessment & Planning



Strategic Planning



Next Steps

Under the new institutional committee structure, Helena College staff and faculty hold monthly meetings of:

- **Strategic Planning and Assessment Committee**
- **Recruitment, Retention, and Completion Committee**

Staff and faculty also participate in monthly campus meetings to coordinate both RevUp and HealthCare Montana

Helena College has received approval from the U.S. Department of Education for the **Experimental Sites Initiative for Competency-Based Education**