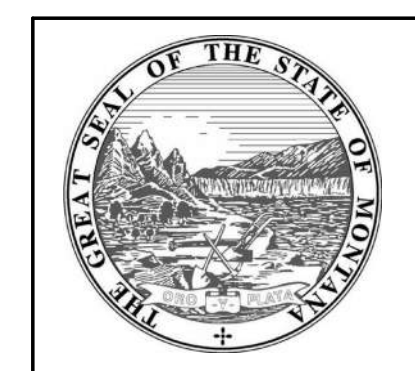
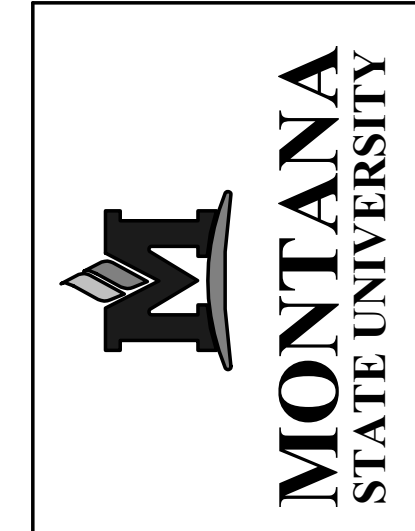


THIS SHEET CONTAINS COLOR-CODED INFORMATION. THIS SHEET SHOULD BE PRINTED IN COLOR. TSP LOGO TO THE RIGHT SHOULD BE RED.



MSU-CPDC
MONTANA STATE UNIVERSITY
BOZEMAN, MONTANA
PHONE: 406.994.5413
FAX: 406.994.5665

AMERICAN INDIAN STUDENT CENTER
MONTANA STATE UNIVERSITY



DRAWN BY: KCB		
REVIEWED BY: MDA		
REV.	DESCRIPTION	DATE

STAMP

PPA#02181676

A/E#00-00-00

CONSULTANT#:

SHEET TITLE
SITE PLAN

SHEET
A-101

DATE
05/09/2018



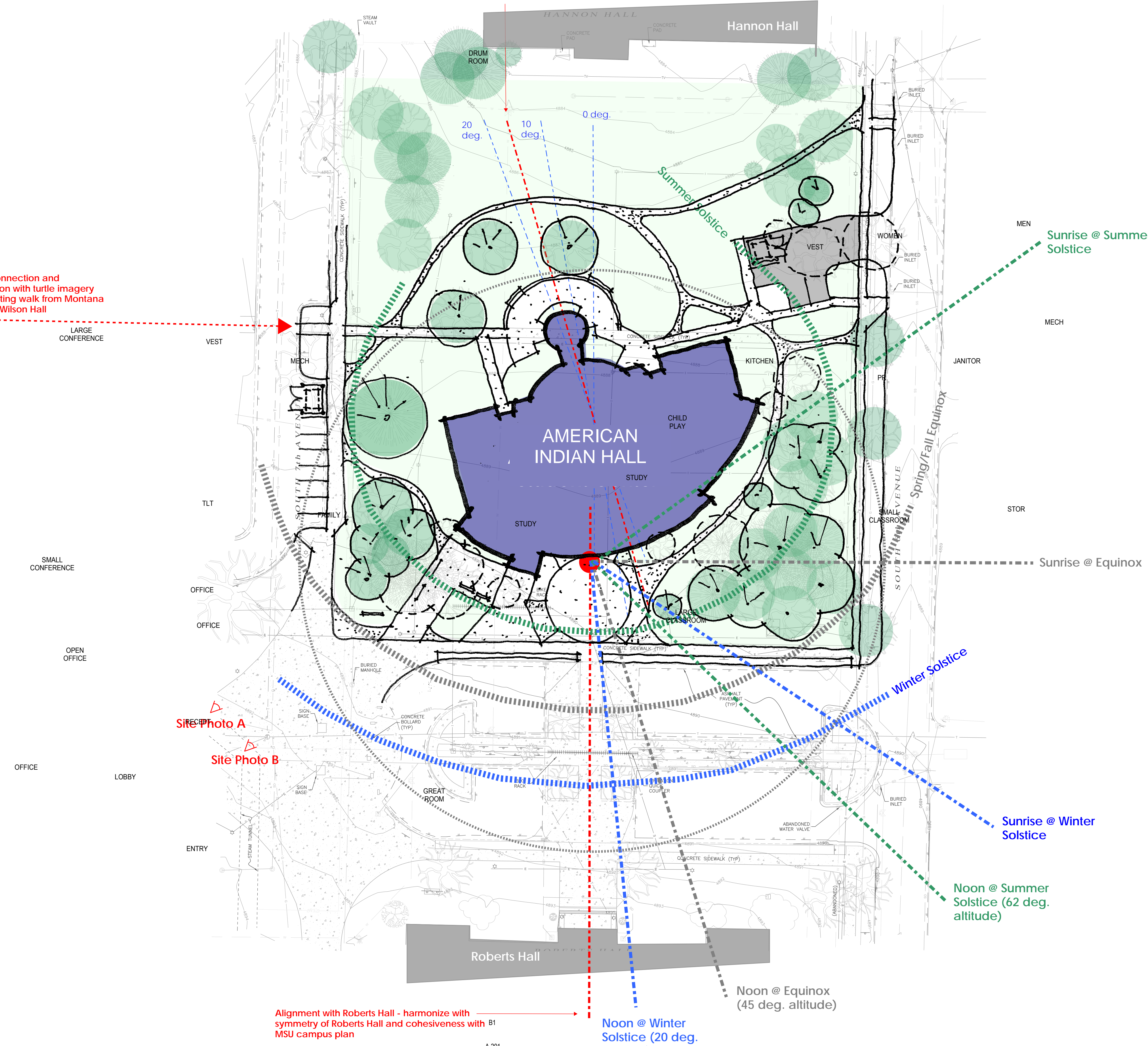
Site Photo A



Site Photo B

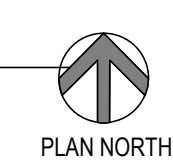
15 degree rotation proposed - provides ceremonial east entry exposure and consistent with Hannon Hall orientation for cohesive MSU campus plan

Visual connection and termination with turtle imagery from existing walk from Montana Hall and Wilson Hall



Alignment with Roberts Hall - harmonize with symmetry of Roberts Hall and cohesiveness with MSU campus plan

A1 **BREE EVAN FLOOR PLAN OPTION 3** (red Location)
SCALE: APPROX. 1" = 30'-0"



This space reserved for Montana State University use (cover page only). Otherwise, use for Key Plan