

MSU PROPERTY

LOT 1
131,167 SqFt
3.01 ACRES

OPEN SPACE I
74,564 SqFt
1.71 ACRES

MITCHELL DEVELOPMENT GROUP PROPERTY

PROPERTY LINE

PROPOSED 8" WATER MAIN

PROPOSED 8" SANITARY SEWER MAIN

PROPOSED GAS, POWER AND COMMUNICATIONS

TECHNOLOGY BLVD. WEST

TECH

FOWLER AVENUE

35' PROPOSED TECHNOLOGY BLVD. WEST

45' PROPOSED TECHNOLOGY BLVD. WEST - ROW

45' PROPOSED ACCESS & UTILITY EASEMENT

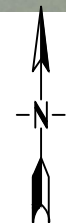
30' EXISTING FARMERS CANAL EASEMENT

PROPERTY LINE

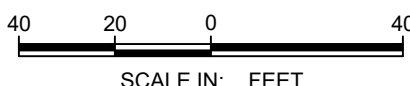
CL EXISTING FARMERS CANAL

PROPERTY LINE

MSU PROPERTY




LOCATION OF PROPOSED 15' ACCESS & UTILITY EASEMENT FROM MSU

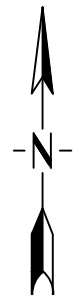
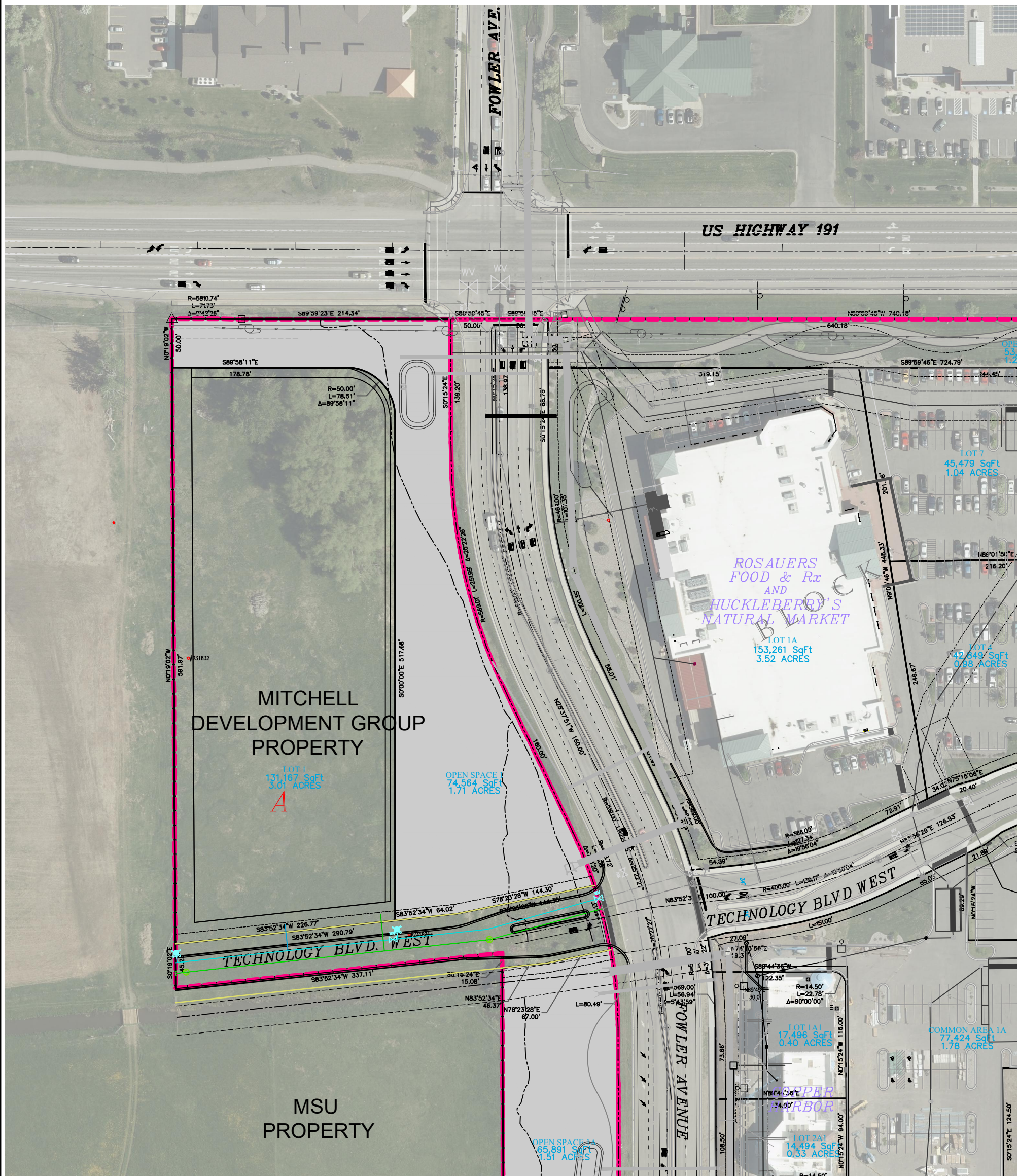


SCALE IN: FEET


ITEM # 185-2003-R1119
Attachment #1
Page 1 of 2

 engineers • surveyors • planners • scientists 2880 Technology Blvd West Bozeman, MT 59718 406.587.0721 www.m-m.net <small>COPYRIGHT © MORRISON-MAIERLE, INC. 2019</small>	DRAWN BY: JAU DSGN. BY: JAU APPR. BY: JAU DATE: 09/2019	BOZEMAN GATEWAY SUBDIVISION PUD PHASE 5 BOZEMAN MONTANA	PROJECT NO. 3638.009
	TECHNOLOGY BLVD. WEST PROPOSED	FIGURE NUMBER FIG. 3	

N:\3638\1009\ACAD\Basemaps\PUD-Site-New.dwg Plotted by james (jim) a. ullman on Sep/19/2019



SCALE IN FEET

 <p>engineers • surveyors • planners • scientists</p>	<p>2880 Technology Blvd West Bozeman, MT 59718 406.587.0721 www.m-m.net</p> <p>COPYRIGHT © MORRISON-MAIERLE, INC. 2019</p>	<p>DRAWN BY: JAU</p> <p>DSGN. BY: JAU</p> <p>APPR. BY:</p> <p>DATE: 09/2019</p>	<p>BOZEMAN GATEWAY SUBDIVISION PUD PHASE 5</p>	<p>PROJECT NO. 3638.009</p>
		<p>BOZEMAN</p>	<p>TECHNOLOGY BLVD. WEST PROPOSED</p>	<p>MONTANA</p>

N:\3638\009\ACAD\Basemaps\IPUD-Site-New.dwg Plotted by james (jim) a. ullman on Sep/18/2019