



MUS Spring Enrollment Report

Scott Lemmon

Director of Admissions and Enrollment Strategy

OCHE

May 2025

Fiscal Year Enrollment Report - FY25



Fiscal Year 25 FTE counts include End of Term counts for Summer and Fall semesters o..

Overall enrollments increased 2.2% from FY24, below the the national average which recorded an increase of 4% for public two-year and four-year colleges (source: National Student Loan Clearinghouse Fall estimates <https://nscresearchcenter.org/current-term-enrollment-estimates/>).

Resident undergraduate FTE showed a 3% increase while graduate FTE saw a .5% increas..

MT University System Enrollment for Entire System

This dashboard presents information on FTE for the MUS as a system. Select options on the right to filter data and hover your cursor over a bar for specifics of the population. Census data prior to Fall 2016 is not available for Flathead Valley Community College and is excluded from totals for those periods. Please see our Headcount dashboard at <https://mus.edu/data/dashboards/headcount.asp> for headcount and demographic information.

Census records are not gathered for Summer or Fiscal Year. If selected a blank page will be displayed.

Measurement Period

Fiscal Year

Event Type

End of Term

Campus Type

All

Residency

All

Student Population

All

Student Population

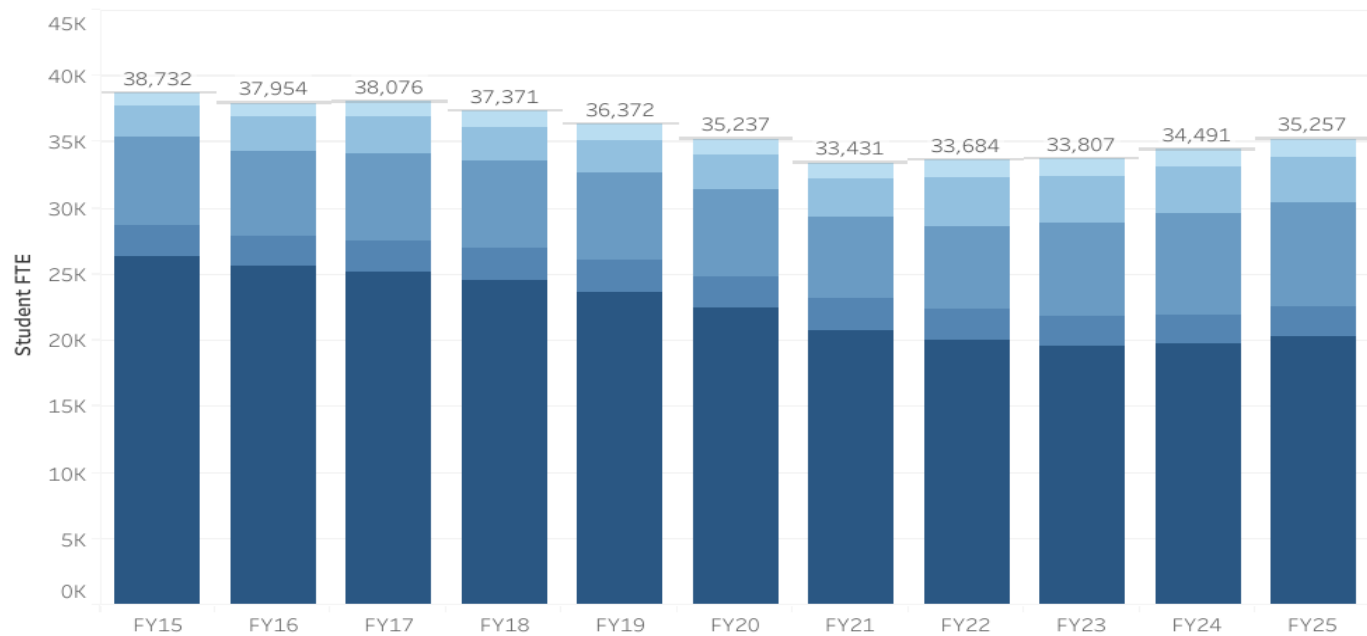
Non-Resident Gradua..

WUE

Non-Resident Underg..

Resident Graduate

Resident Undergradu..



Residency	Student Population	FY15	FY16	FY17	FY18	FY19	FY20	FY21	FY22	FY23	FY24	FY25
Resident	Resident U..	26,361	25,615	25,163	24,532	23,653	22,538	20,772	19,965	19,521	19,797	20,375
	Resident Gr..	2,393	2,341	2,443	2,481	2,413	2,374	2,438	2,389	2,254	2,178	2,190
	Total	28,755	27,956	27,605	27,012	26,066	24,912	23,210	22,354	21,775	21,975	22,565
Non-Reside..	Non-Reside..	6,627	6,361	6,563	6,582	6,574	6,551	6,233	6,271	7,166	7,613	7,900
	WUE	2,424	2,640	2,758	2,591	2,541	2,622	2,780	3,703	3,510	3,536	3,432
	Non-Reside..	927	997	1,149	1,186	1,191	1,152	1,209	1,357	1,356	1,368	1,359
	Total	9,978	9,998	10,471	10,359	10,306	10,325	10,222	11,331	12,032	12,516	12,692
MUS Grand Total		38,732	37,954	38,076	37,371	36,372	35,237	33,431	33,684	33,807	34,491	35,257

Fiscal Year Enrollment Report - FY25



Overall enrollments increased 2.2% from FY24, below the the national average which recor..

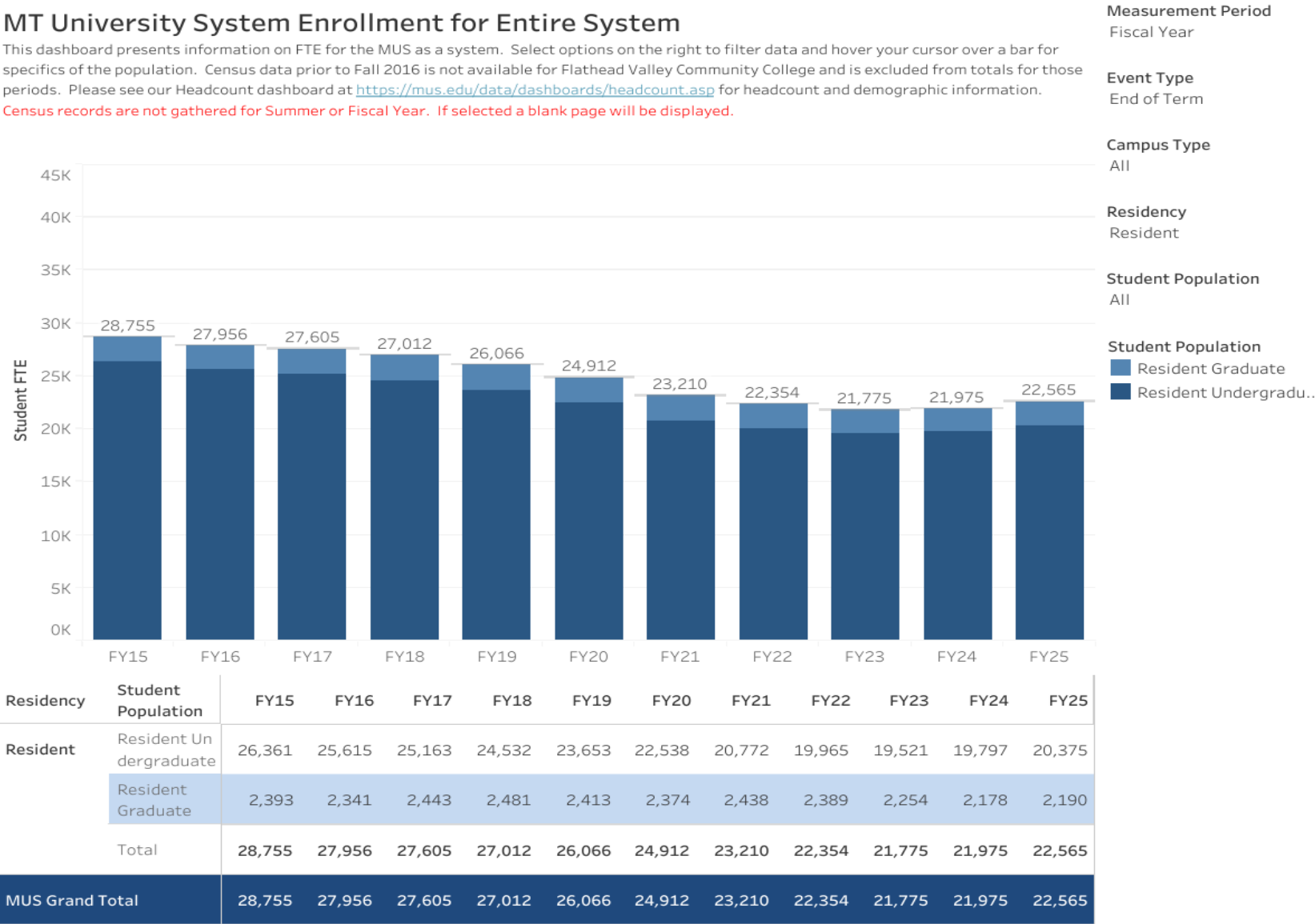
Resident undergraduate FTE showed a 3% increase while graduate FTE saw a .5% increase. Overall residential FTE increased by 2.7%.

Total non-resident enrollments again increased by 1.4% with undergrads increasing by 3.8%, ..

MT University System Enrollment for Entire System

This dashboard presents information on FTE for the MUS as a system. Select options on the right to filter data and hover your cursor over a bar for specifics of the population. Census data prior to Fall 2016 is not available for Flathead Valley Community College and is excluded from totals for those periods. Please see our Headcount dashboard at <https://mus.edu/data/dashboards/headcount.asp> for headcount and demographic information.

Census records are not gathered for Summer or Fiscal Year. If selected a blank page will be displayed.



Fiscal Year Enrollment Report - FY25



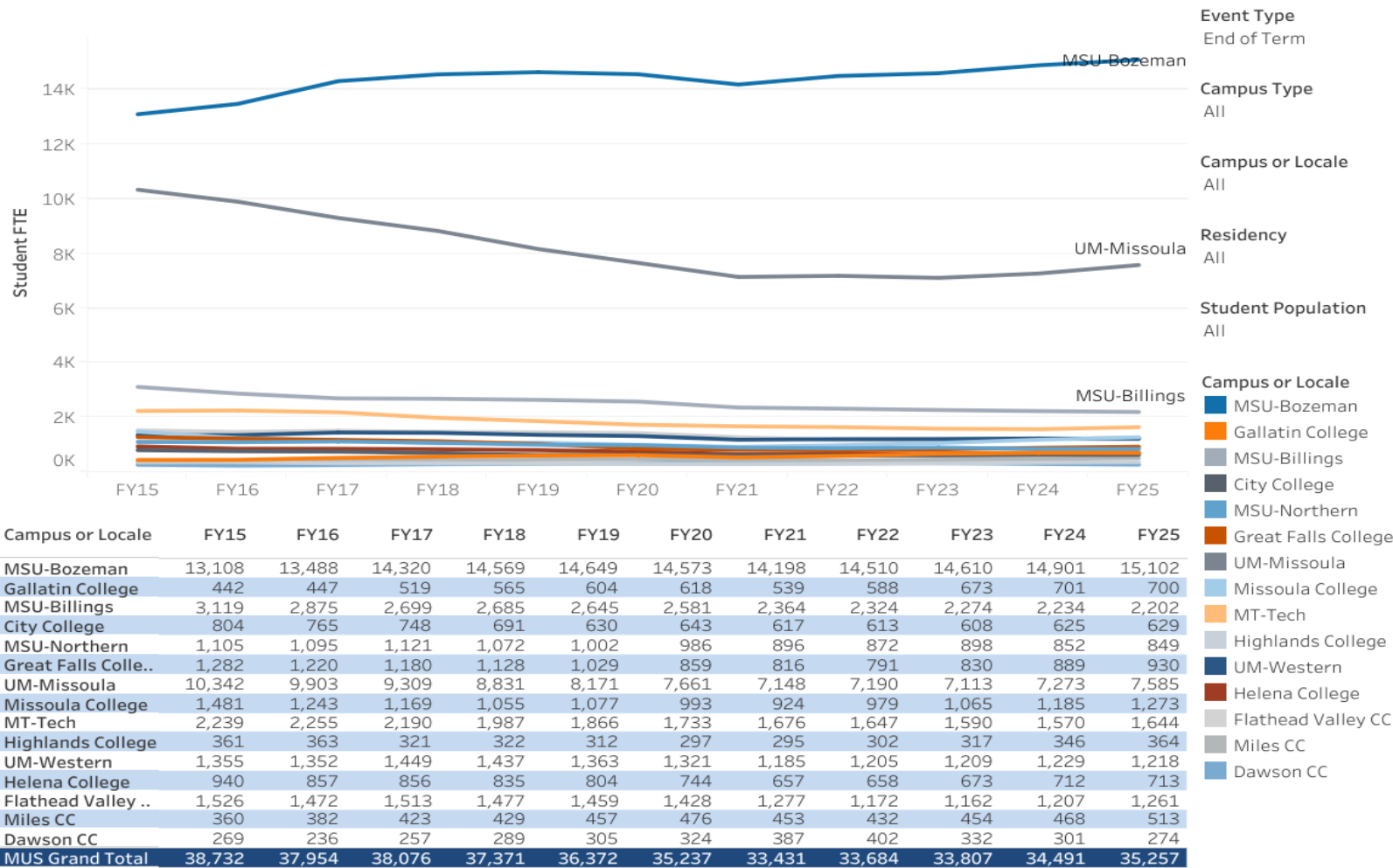
Enrollments increases nationally over all sectors by 4.5% (source: National Stude..

Many individual institutions saw increases in total enrollment in FY25, contributing to the overall increase of 2.2%.

Increases in resident enrollments are seen in FY25, up 3.5%.

MT University System Enrollment by Institution

This dashboard presents information on FTE for the institutions of the MUS. Select options on the right to filter data and hover your cursor over a line for specifics of the population. Census data prior to Fall 2016 is not available for Flathead Valley Community College and is excluded from totals for those periods. Please see our Headcount dashboard at <https://mus.edu/data/dashboards/headcount.asp> for headcount and demographic information. **Census records are not gathered for Summer or Fiscal Year. If selected a blank page will be displayed.**



MUS First-time Freshman

Incoming Freshman classes for fall term, excluding transfer students. Totals do not include FVCC prior to Fall 2016. Student counts are from the Census (3rd week of school) and only include paid and confirmed (those who have a commitment to pay) students.



Group By
Residency

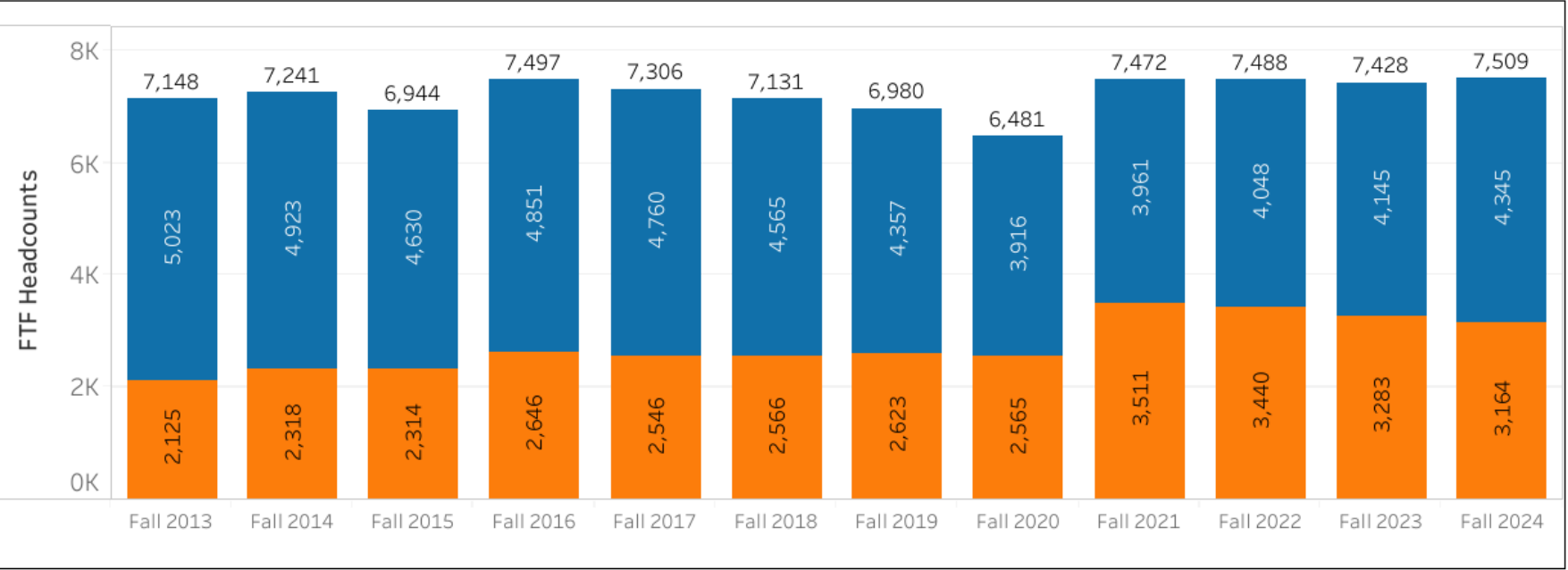
Traditional Freshman
All

Campus
All

Locale
All

Grouping
In State
Out of State

Fall 2024 First Time Freshman	First Time Freshman Percent Change Compared to Previous Year
7,509	1.1%



	Fall 2013	Fall 2014	Fall 2015	Fall 2016	Fall 2017	Fall 2018	Fall 2019	Fall 2020	Fall 2021	Fall 2022	Fall 2023	Fall 2024
In State	5,023	4,923	4,630	4,851	4,760	4,565	4,357	3,916	3,961	4,048	4,145	4,345
Out of State	2,125	2,318	2,314	2,646	2,546	2,566	2,623	2,565	3,511	3,440	3,283	3,164
Grand Total	7,148	7,241	6,944	7,497	7,306	7,131	6,980	6,481	7,472	7,488	7,428	7,509

Fiscal Year Enrollment Report - FY25



In state first-time freshman numbers increased by 4.8% overall (4145 to 4345), addin..

The number of students applying through the ApplyMontana application has increased dramatically, with campuses further utilizing the platform.

Capture rates increased to 35.1% as the number of graduates increased in the state.

MUS Applicants by Term/App Cycle

Running total of applications received over application cycles. The BEG- designation indicates applications recieved in the year prior to the term, whie the END- designation indicates the months in the same year as the term.

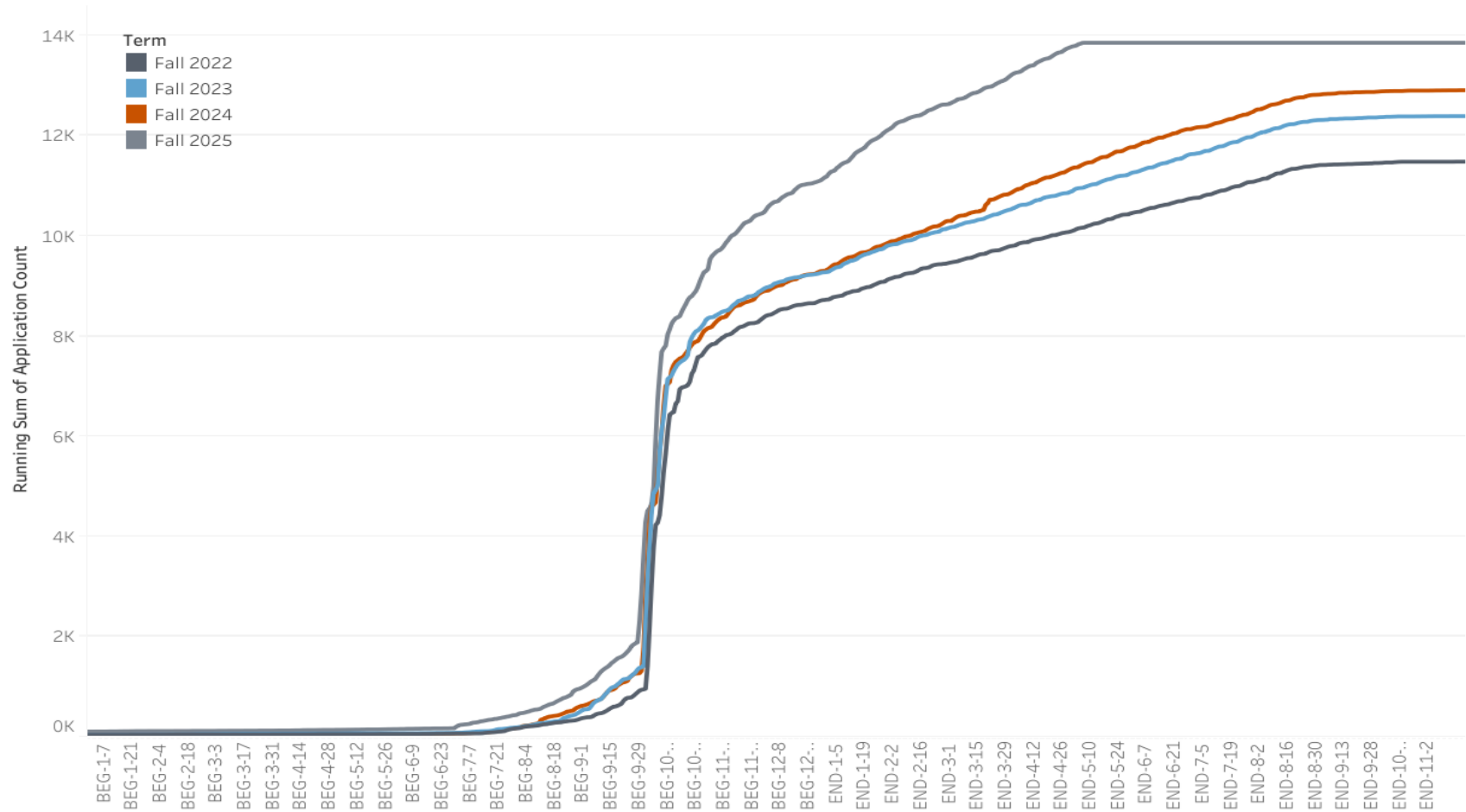
Measurement Period
Fall

Student Campus
All

Residency Status
All

Applicant Count Type
All Apply Montana

Final Admission Status
All

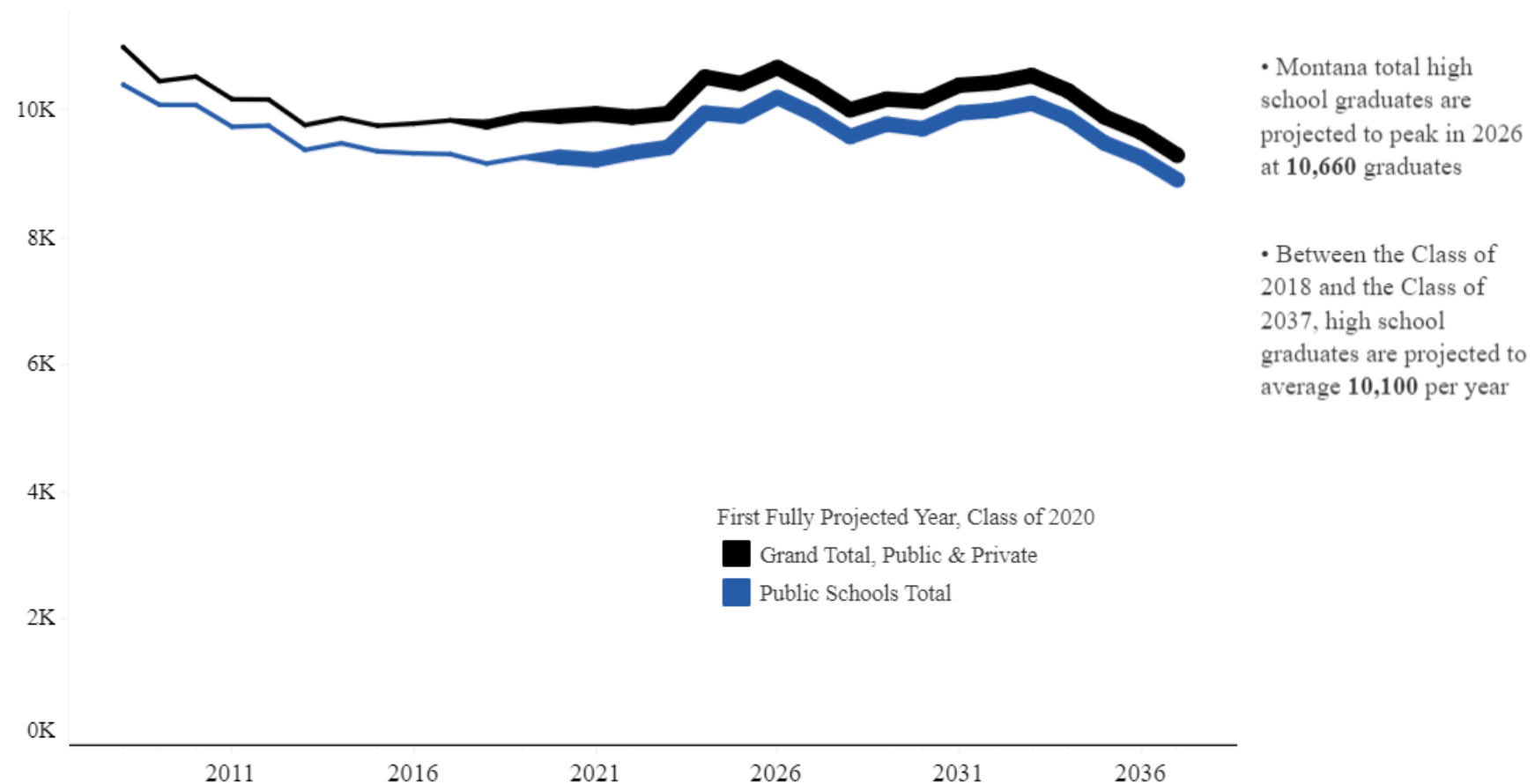




Montana High School Graduate Projections

KNOCKING
AT THE COLLEGE DOOR

Total & Public High School Graduates, Class of 2008 to 2037



High School Graduate Projections by Total Number



Charts



Data Table



Data Notes



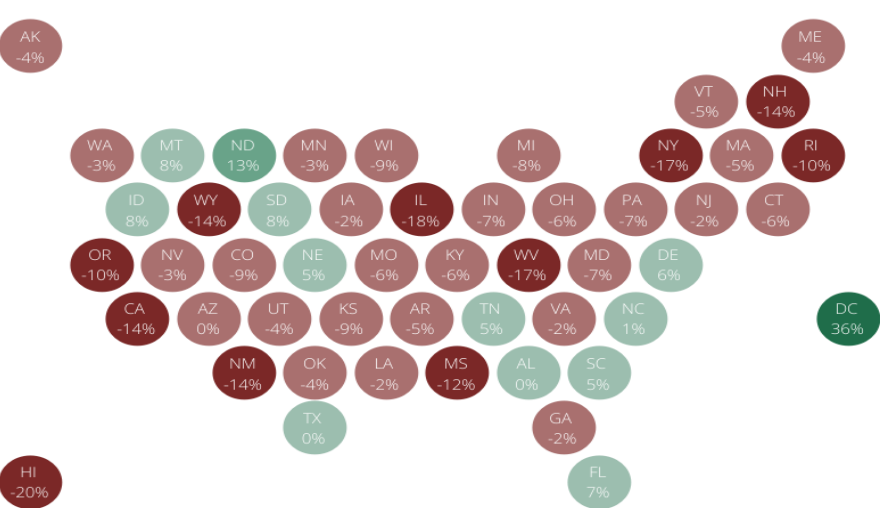
Filters

School Type
Total

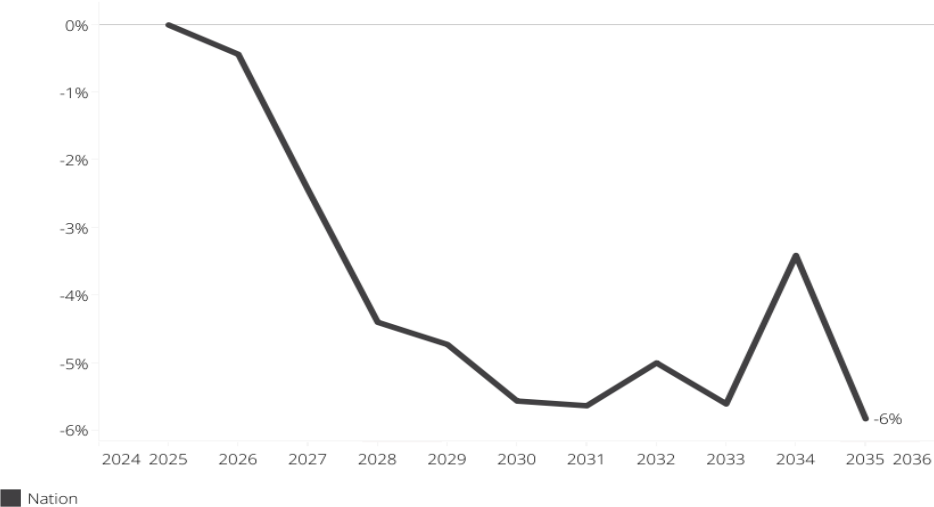
Graduation Years
2025 to 2035

% Change
-20% 40%

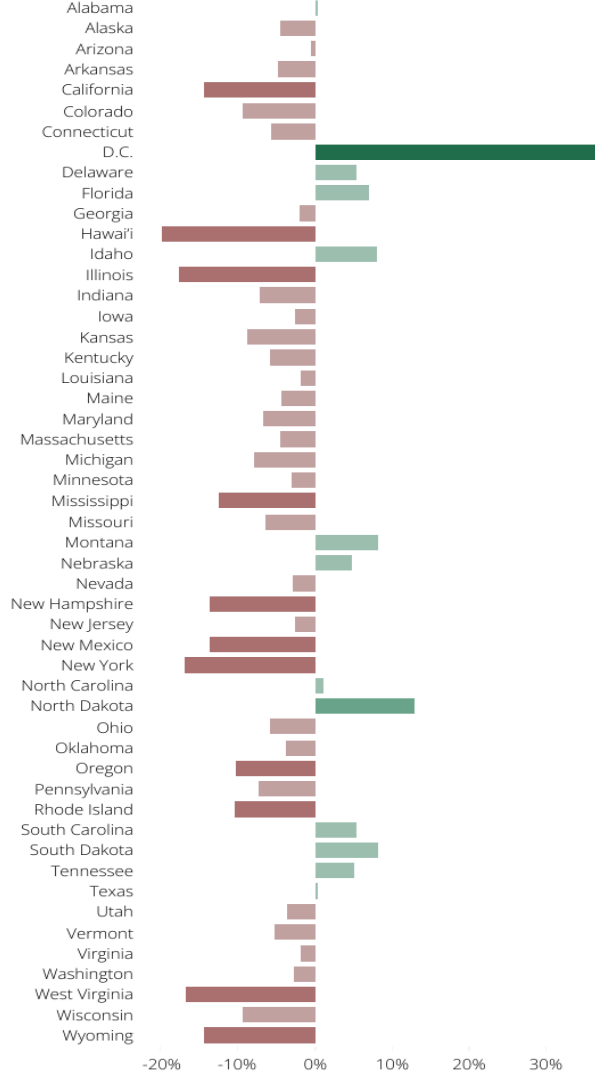
Projected percent change, 2025 to 2035
Select a state on the map to highlight on the bar chart and add to the line below



Projected percent change, 2025 to 2035
Select a state from the map above to add to this chart



Projected percent change, 2025 to 2035
Select a state from the map to highlight



Fiscal Year Enrollment Report - FY25

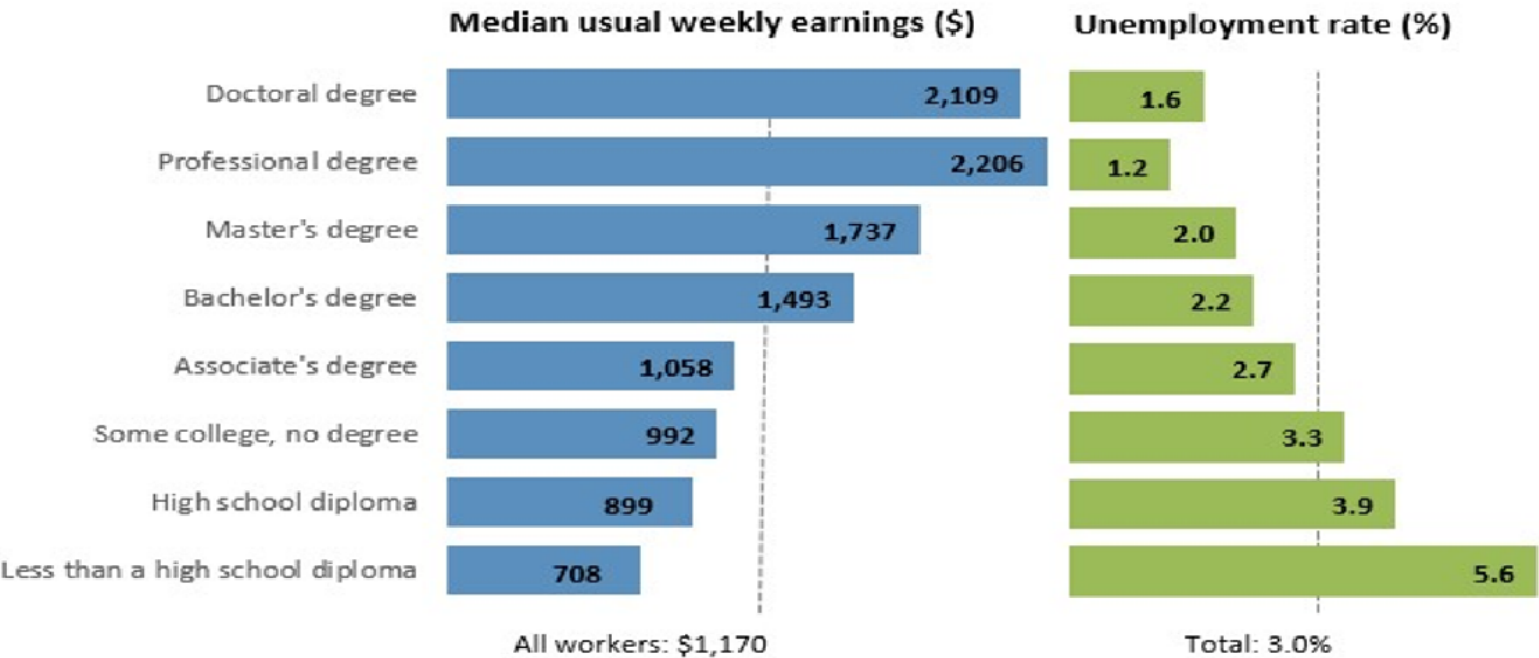


Capture rates increased to 35.1% as the number of graduates increased in the st..

Higher Education remains a prominent path to financial stability. Earnings increase as educational attainment rises, according to the Bureau of Labor Statistics.

We continue to work diligently to increase resident access. Recent efforts to encourage residents t..

Earnings and unemployment rates by educational attainment, 2023



Note: Data are for persons age 25 and over. Earnings are for full-time wage and salary workers.
Source: U.S. Bureau of Labor Statistics, Current Population Survey.



Discussion