

Action Item Request:

- 1) Allocate State Appropriations
- 2) Set Tuition Rates
- 3) Approve Mandatory & Non-mandatory Fee Requests
- 4) Distribute Performance Funding

Key Budget Metrics

Longitudinal Analysis | Benchmark Comparisons

- Enrollment
- Growth of appropriations, tuition revenue, expenditures, financial aid, in comparison to inflation and household income
- Net Tuition paid by 1st-time, full-time resident students
- Tuition & fees as a percentage of household income
- Tuition rate comparisons by mission type
- Education Revenue per student comparison nationally
- State % Share

Enrollment Highlights

Three straight years of enrollment growth

- Overall headcount has increased from 41,000 in Fall 2021 to 43,000 in Fall 2024
- Fall 2024 marks the highest number of 1st-time Freshmen since in Fall 2016
- The number of Resident 1st-time Freshmen continues to grow, Fall 2024 is highest mark since Fall 2019
- Capture rates of MT high school students have improved... up to 36%
- 10 out of 12 MUS campuses experienced growth in past year; 4th straight year of increased enrollment

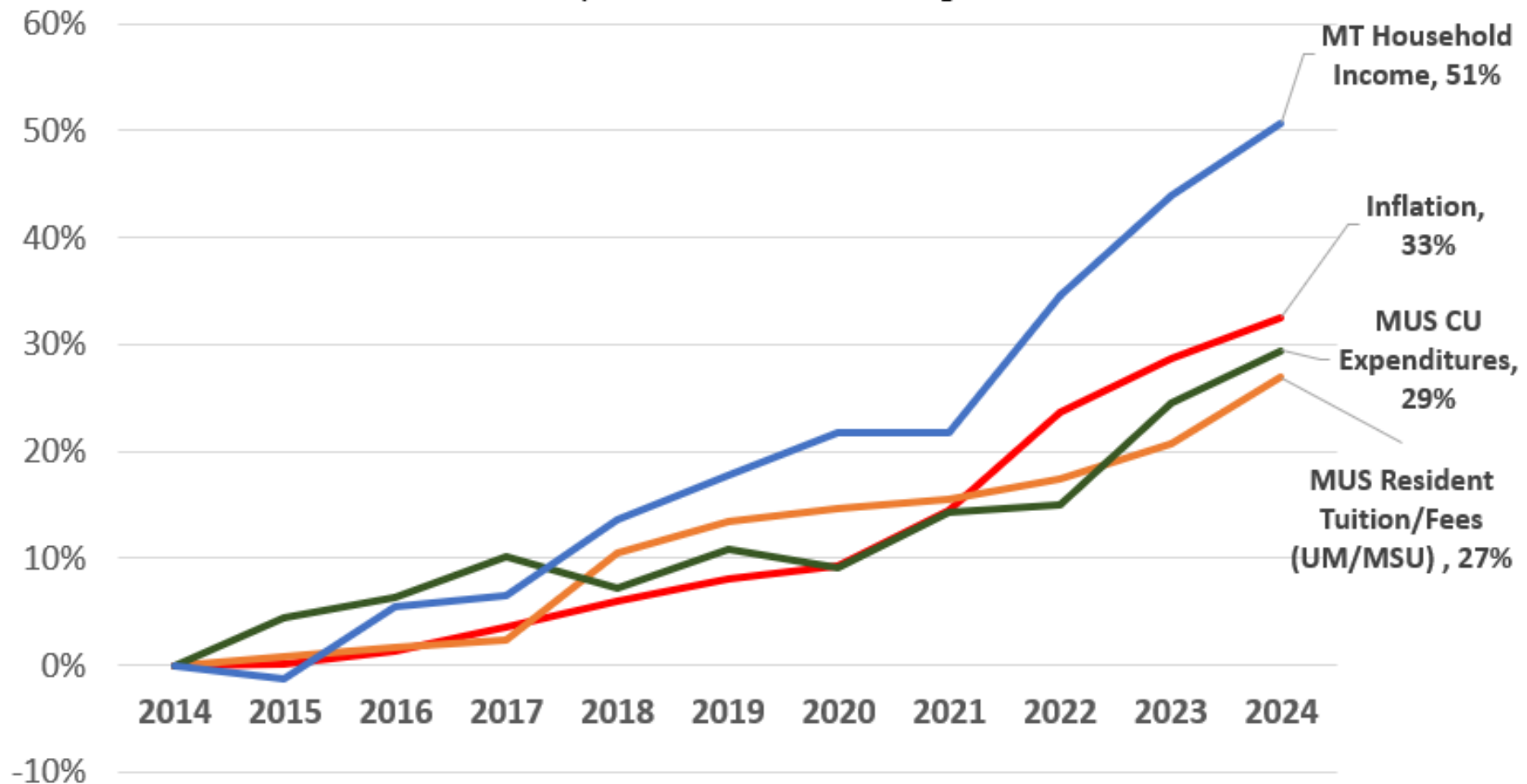
Retention rates improve

- Retention of 1st-time in-state freshmen is at the highest level its been at in 10 years (72%)
- Pell eligible, 1st-time in-state freshmen are driving the increases, 10 year high at 67%... evidence of MT 10 working

Key Budget Metrics

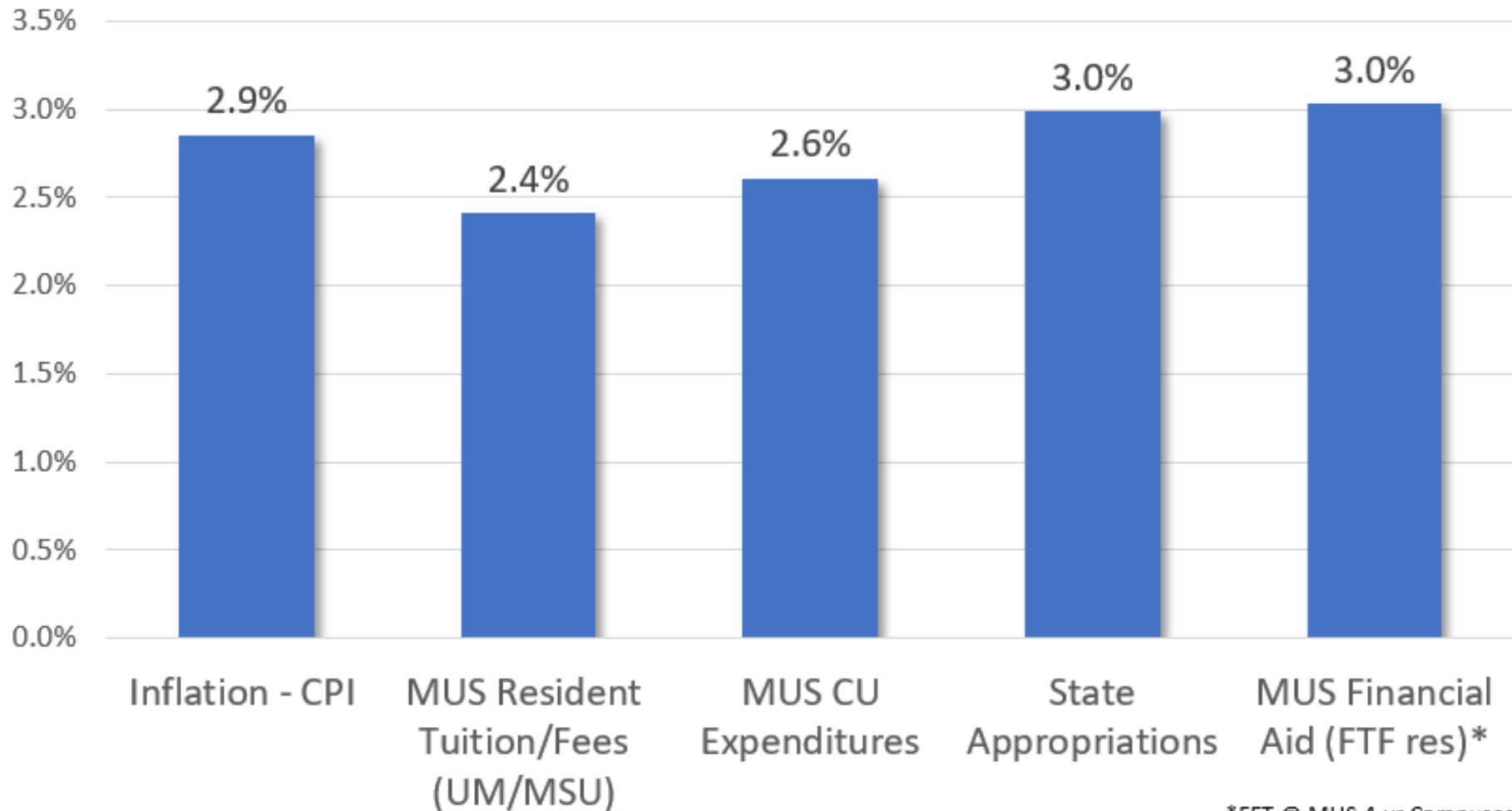
Growth of Key Budget Drivers

10-year, Cumulative % Change



Growth of Key Budget Drivers

Compounded Annual Growth Rate, FY14 - FY24

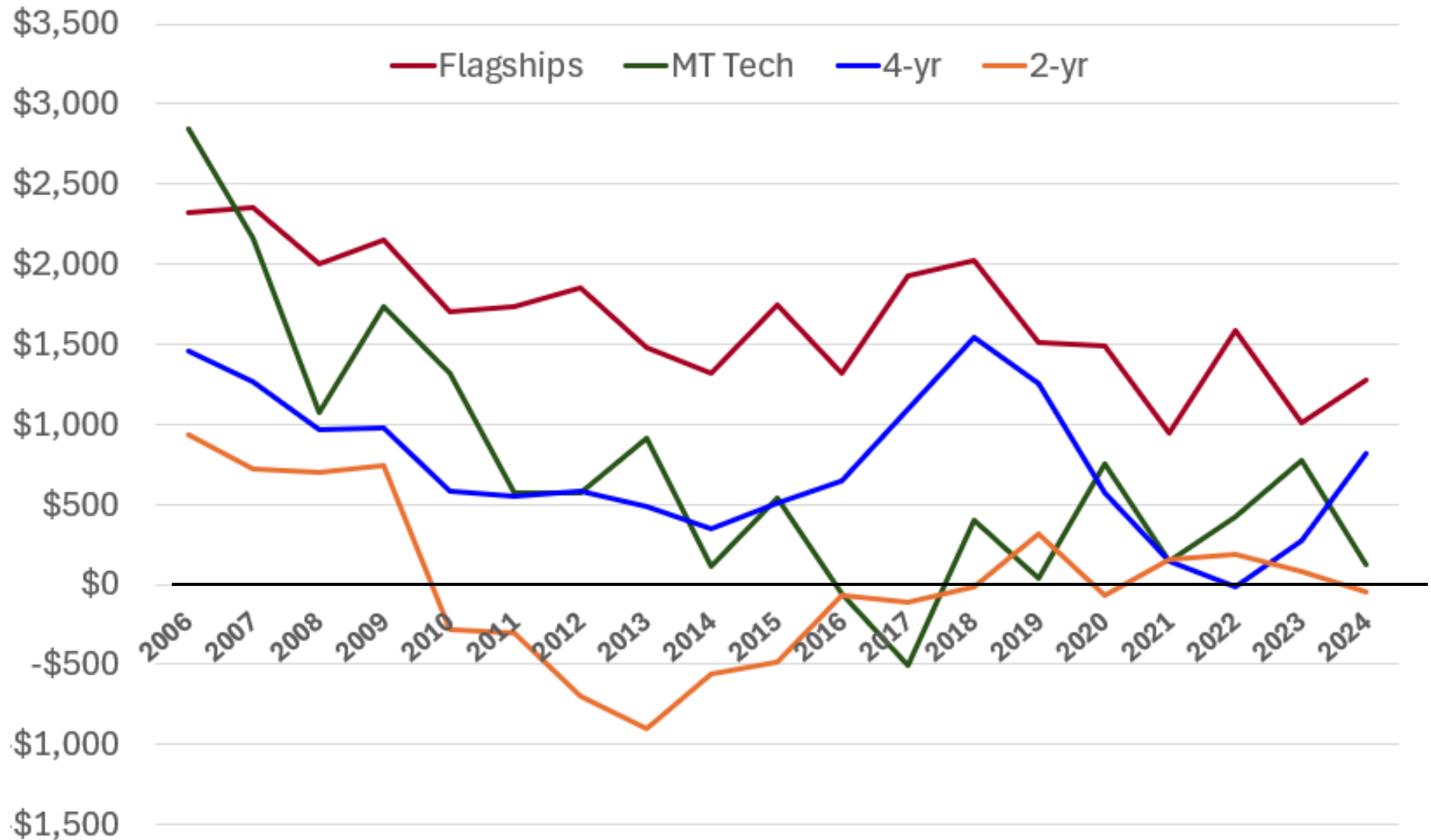


*FFT @ MUS 4-yr Campuses

Key Budget Metrics

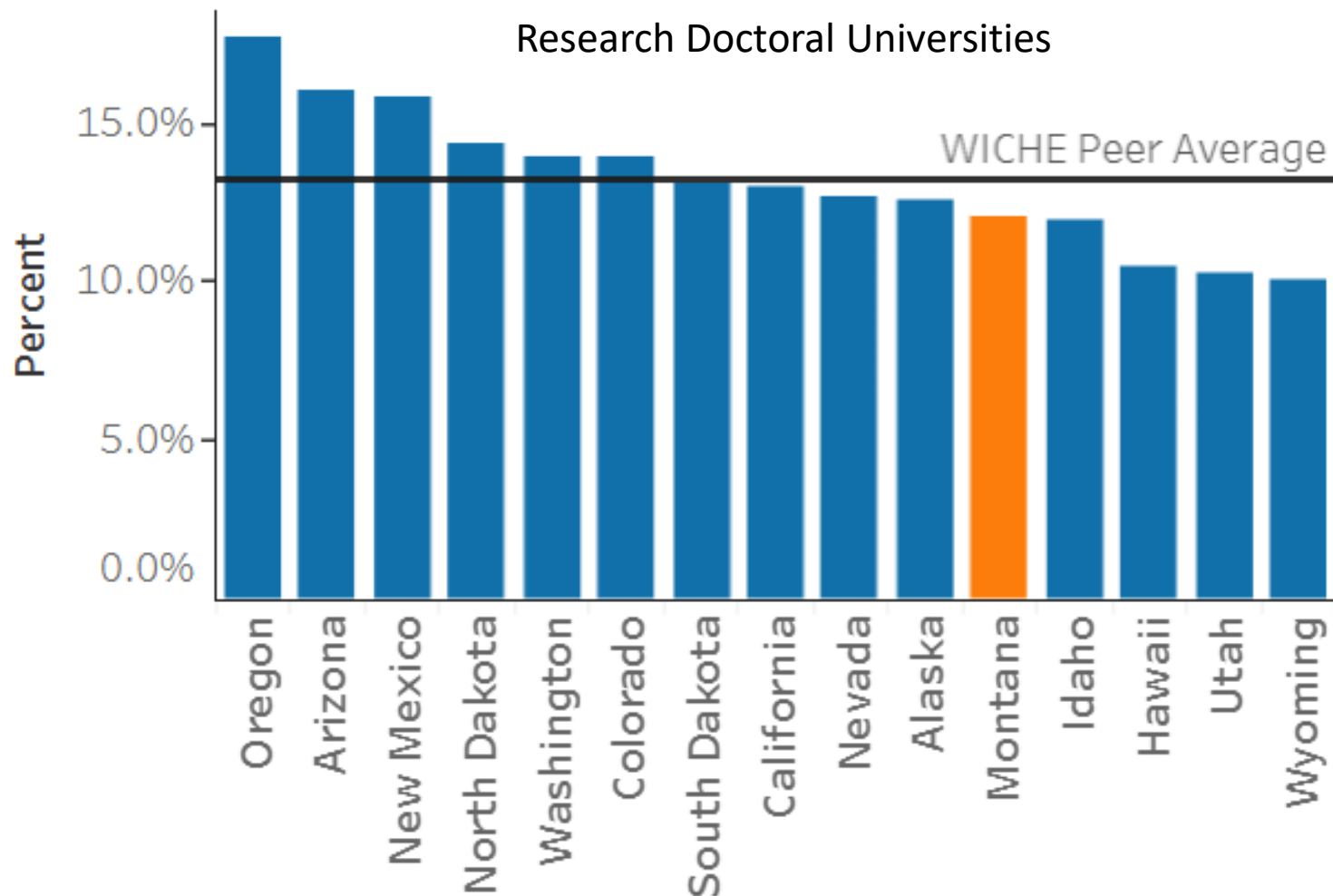
Net Tuition & Fees

1st-time, Full-time Resident Students



Key Budget Metrics

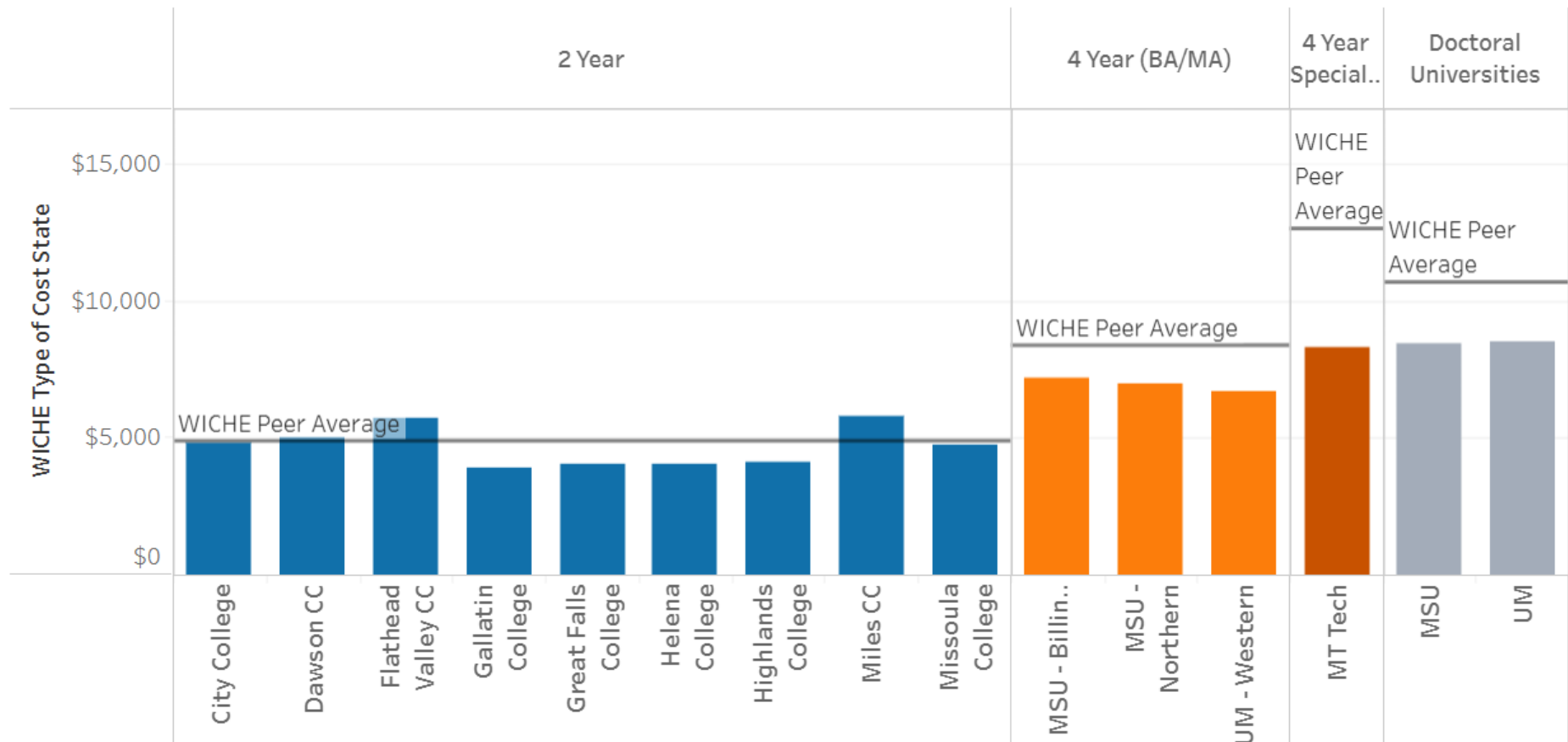
State Comparison of Tuition & Fees as a Percent of Household Income



2024-25 Average Tuition & Fees by State

WICHE average is the state average across all states within WICHE. Constant dollars are in 2024 dollars and nominal dollars are in dollars of that year. Click on the respective campus bar in the graph to be referred to the campus tuition website.

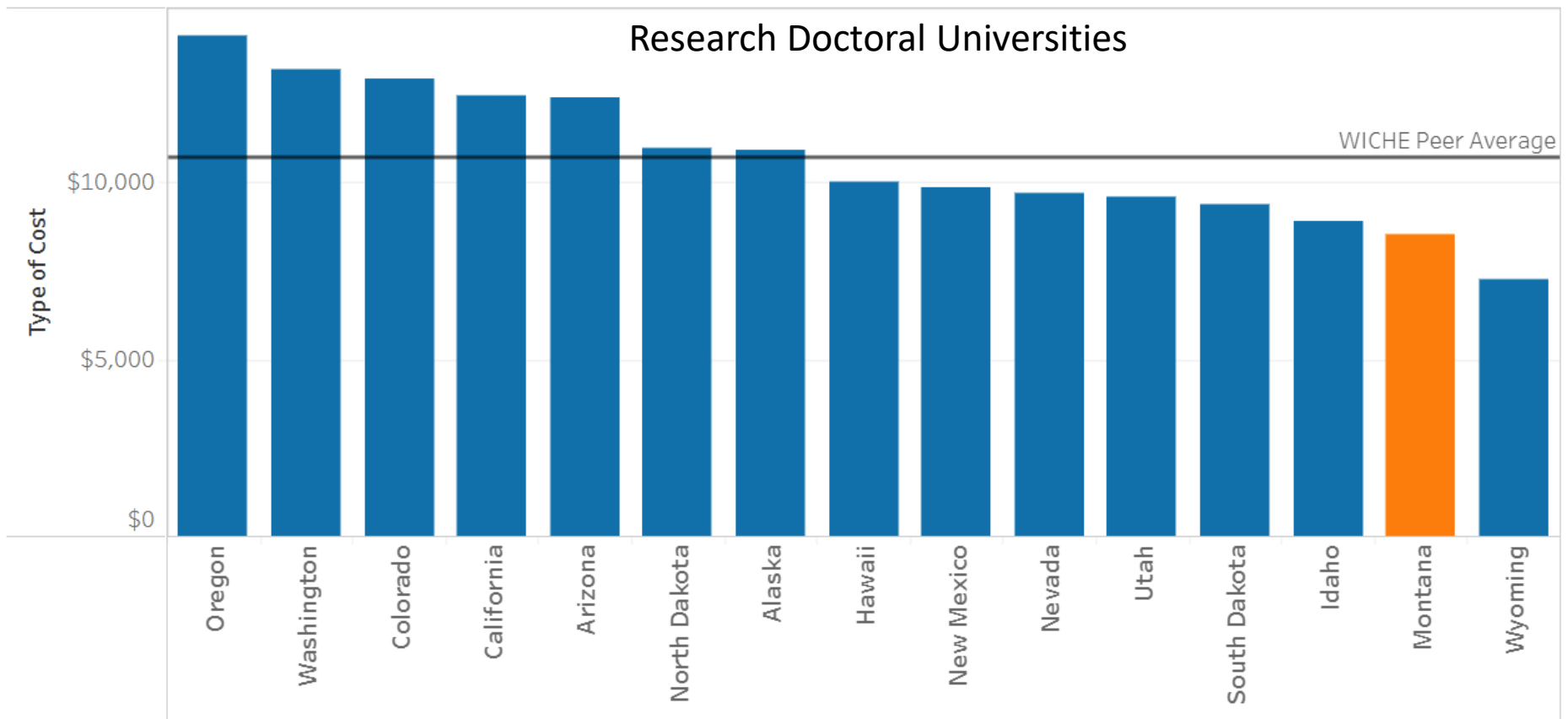
*Tuition and Fees Data Source: Western Interstate Commission for Higher Education (WICHE), *Tuition and Fees in the West 2024-25*



2024-25 Average Tuition & Fees by State

WICHE average is the state average across all states within WICHE. Constant dollars are in 2024 dollars and nominal dollars are in dollars of that year.

*Tuition and Fees Data Source: Western Interstate Commission for Higher Education (WICHE), *Tuition and Fees in the West 2023-24*

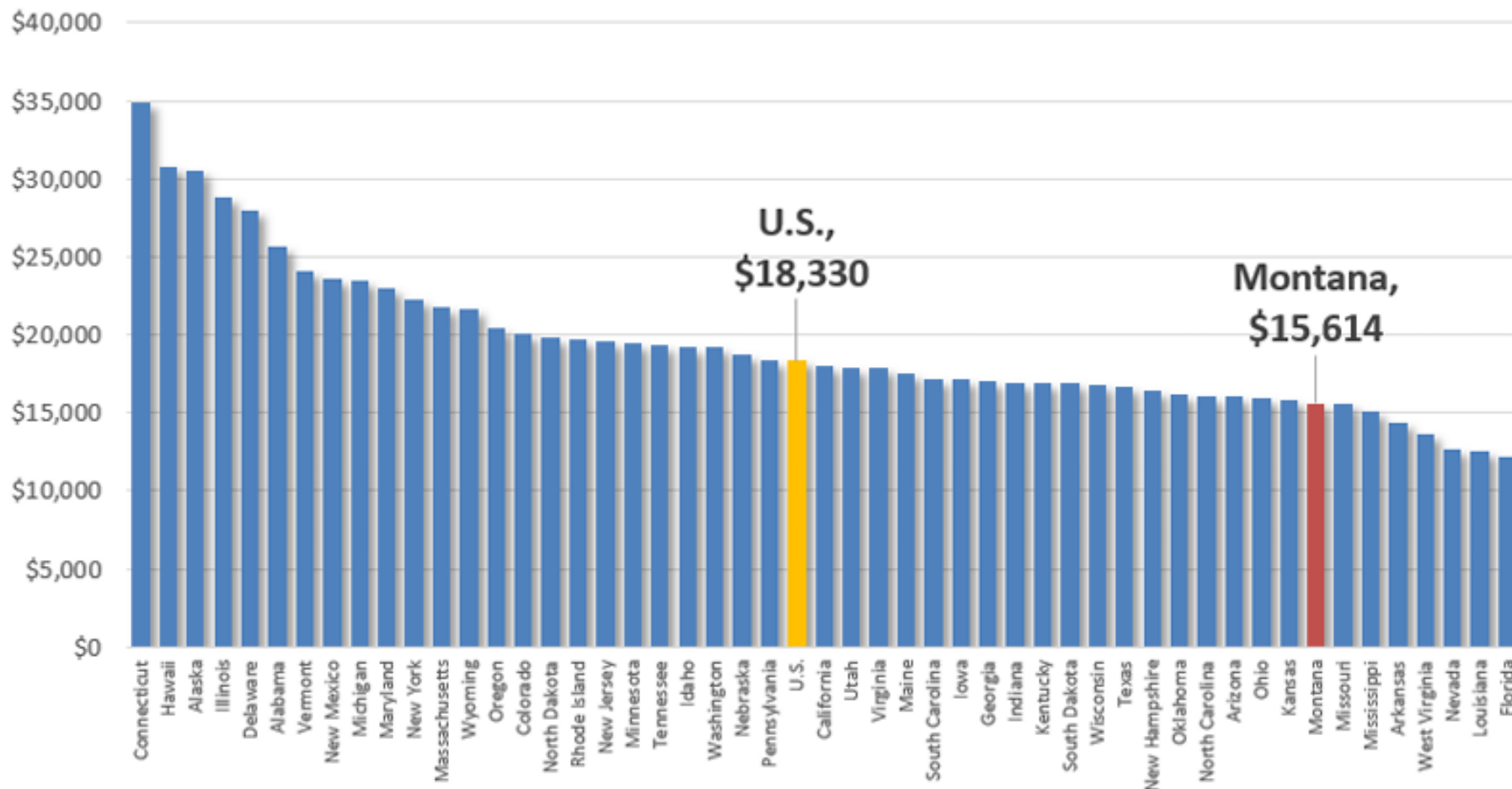


Key Budget Metrics

Educational Revenue per Student FTE, FY23



Educational revenue is the sum of public higher education state appropriations and public in-state and out-of-state net tuition. (includes CC's & state funded financial aid)



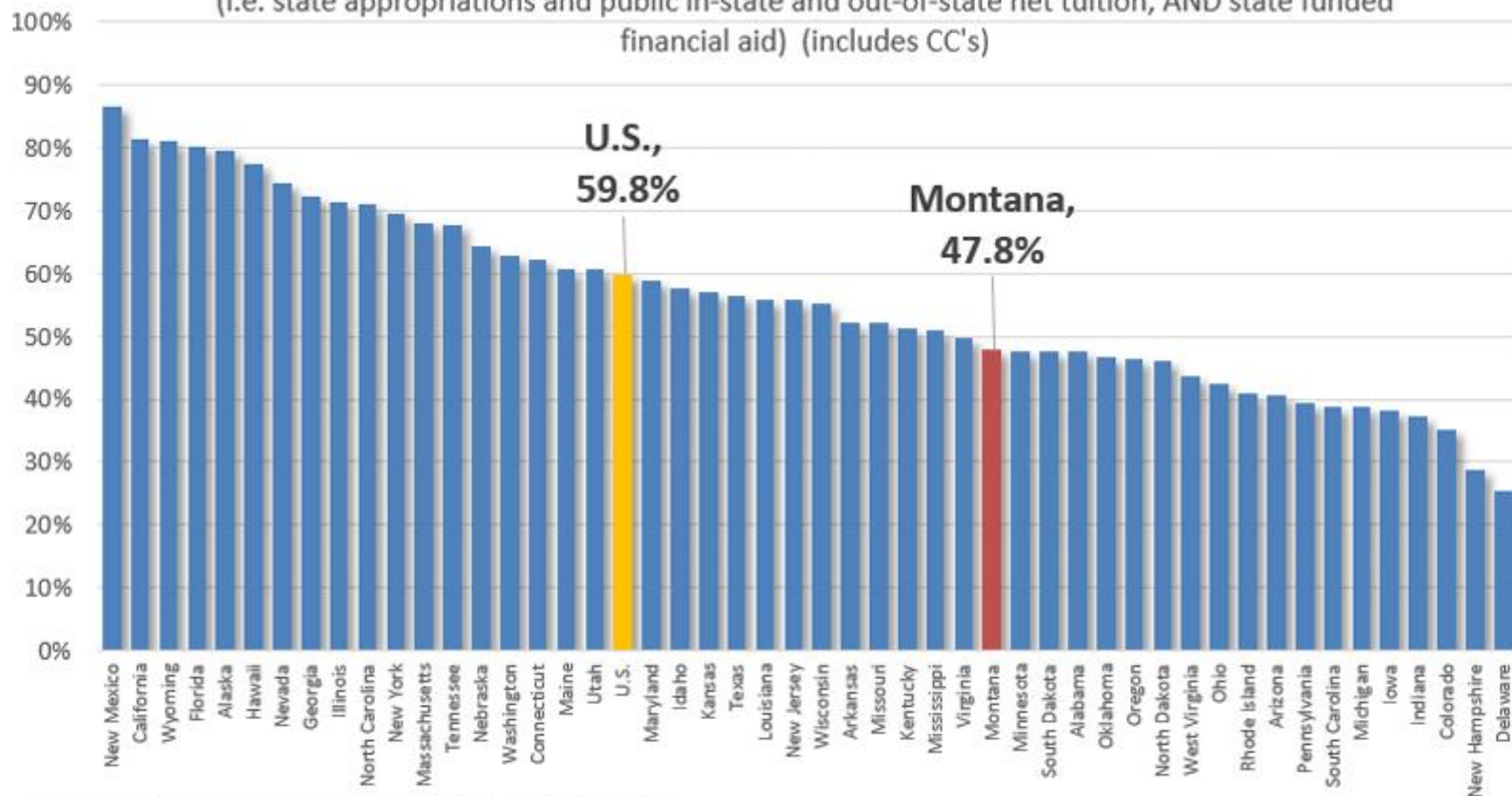
State Higher Education Executive Officers Association. State Higher Education Finance:

MT ranks in the lower third in the nation in total funding per student

Key Budget Metrics

State % Share, FY23

State appropriations as a percent of public higher education total educational revenue
(i.e. state appropriations and public in-state and out-of-state net tuition, AND state funded
financial aid) (includes CC's)



State Higher Education Executive Officers Association. State Higher Education Finance.

MT is below the national average, but in the mid-section of state rankings for State % Share

Summary of Action Item

- **State Appropriation Allocation**
 - Pay Plan distributed based on employee FTE, 2.5% or \$1.00 per hour (whichever higher)
 - Present Law allocated based on distribution of three-year average of each campus' portion of resident student FTE
- **Tuition Rates**
 - Relatively low rates, in comparison (capacity)
 - Availability of financial aid (affordability)
 - WUE (alignment)
 - Student vs State Share, 7 out 8 campus higher % State Share, half above 70% state share (stability)
- **Fees**
 - Mandatory fees increase set at 3% in the aggregate
 - Course fees, program fees, and room and board increases
- **Performance Funding**