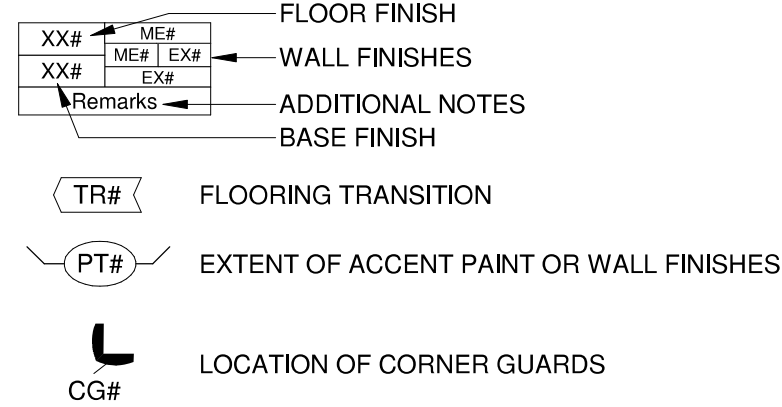


FINISH PLAN LEGEND



ROOM FINISH ABBREVIATIONS

- FLOORING**
- SV1 SHEET VINYL FLOORING
1. PATCRAFT FORGE AHEAD, STYLE #: 1500V
HEAT WELDED, COLOR: TBD
2. ARMSTRONG, MEDINTECH,
HEAT WELDED, COLOR: TBD
3. MANNINGTON, BIOSPEC MD,
HEAT WELDED, COLOR: TBD

- FLOORING TRANSITIONS**
- TR# TRANS PROFILE #

- BASE**
- CB1 COVED BASE, MATCH SV

- WALLS**
- PT1 PAINT, SHERWIN WILLIAMS
SP1 SPEC. PAINT FINISH, SHERWIN WILLIAMS
IDEA PAINT

- WALL PROTECTION**
- CG CORNER GUARD
PAWLING CORPORATION 3"x3"x4", INSTALL SO BOTTOM IS FLUSH
WITH TOP OF SCHEDULE BASE BELOW
CR CRASH RAIL
PAWLING CORPORATION, WG - 8C

- CASEWORK**
- OZ QUARTZ MATERIAL
CAMBRIA NATURAL QUARTZ,
COLOR: WELSHPOOL BLACK 1-1/4" THICK
SST STAINLESS STEEL CASEWORK
INNOVATIVE LABORATORY SYSTEMS
ST STEEL CASEWORK, EPOXY FINISH
INNOVATIVE LABORATORY SYSTEMS,
COLOR: #78 SNOW WHITE
INSET - SQUARE EDGE

ADDITIONAL NOTES

1. NOTE.
2. NOTE.

GENERAL FINISH NOTES

- A. WHERE FINISH TAGS INDICATED MULTIPLE FINISHES, SEE REMARKS AND FINISH PLANS/ELEVATIONS FOR COMPLETE DESIGNATIONS, LAYOUTS, AND DIMENSIONS.
- B. SCHEDULED BASE SHALL WRAP CORNERS AT DOORS AND WINDOWS AND RETURN TO JAMB, UNLESS OTHERWISE NOTED.
- C. FLOOR FINISHES SHALL TERMINATE AT THE CENTER OF THE DOOR(S) IN THE CLOSED POSITION WHEN FLOOR FINISH CHANGES MATERIAL OR COLOR. FLOOR FINISH PATTERNS SHALL EXTEND AND ALIGN AT DOORS IF SAME MATERIAL EXTENDS BETWEEN TWO ADJACENT ROOMS.
- D. FLOOR FINISHES SHALL EXTEND CONTINUOUSLY UNDERNEATH BASE CABINETRY AND OTHER SEMI-PERMANENT FLOOR MOUNTED ITEMS.
- E. PROVIDE SELF-LEVELING FLOOR LEVELER AND/OR PATCHING MATERIALS TO MAINTAIN SUBSTRATE LEVELNESS AS REQUIRED BY FLOORING MANUFACTURER AND AS REQUIRED TO MAINTAIN ACCESSIBILITY DIMENSIONS AT FLOOR TRANSITIONS.
- F. PREPARE ALL EXISTING SURFACES AS REQUIRED TO RECEIVE NEW FINISHES AS SCHEDULED.
- G. ALL RECEPTACLES, SWITCHES, COVER PLATES, ETC. ARE TO BE WHITE UNLESS OTHERWISE NOTED.
- H. ALL INTERIOR CEILINGS SHALL BE PAINTED WITH A FLAT SHEEN, WALLS WITH AN EGGSHELL SHEEN, AND TRIM WITH A SEMI-GLOSS SHEEN, UNLESS NOTED OTHERWISE.

MISSOULA COLLEGE 4TH FLOOR LAB

1205 E BROADWAY ST., MISSOULA, MT 59802

REVISIONS

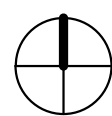
11.14.25

4TH FLOOR FINISH PLAN

A801

DESIGN DEVELOPMENT

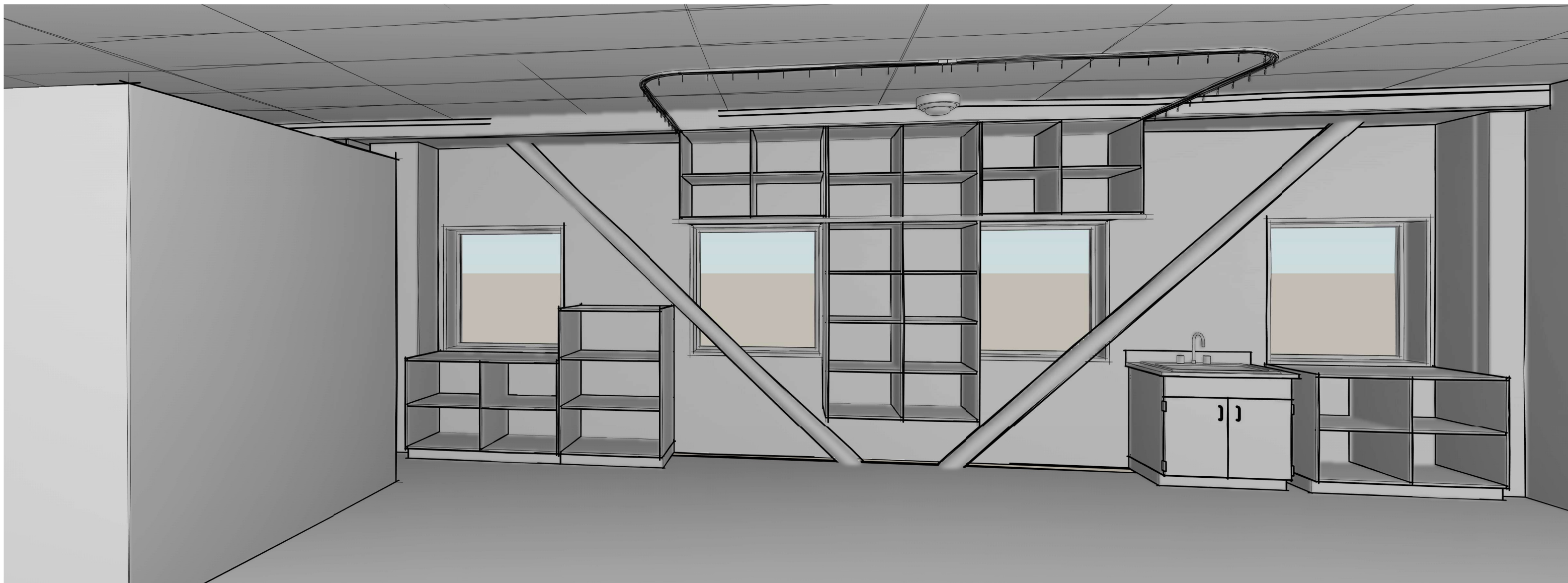
① 4TH FLOOR - FINISH
1/4" = 1'-0"



ATTACHMENT #2
Selected Design Development
Plan Set Sheets
(Finishes, Perspectives)

January 2026 BOR
Cadaver and Procedures Lab Renovations at Missoula College (East)

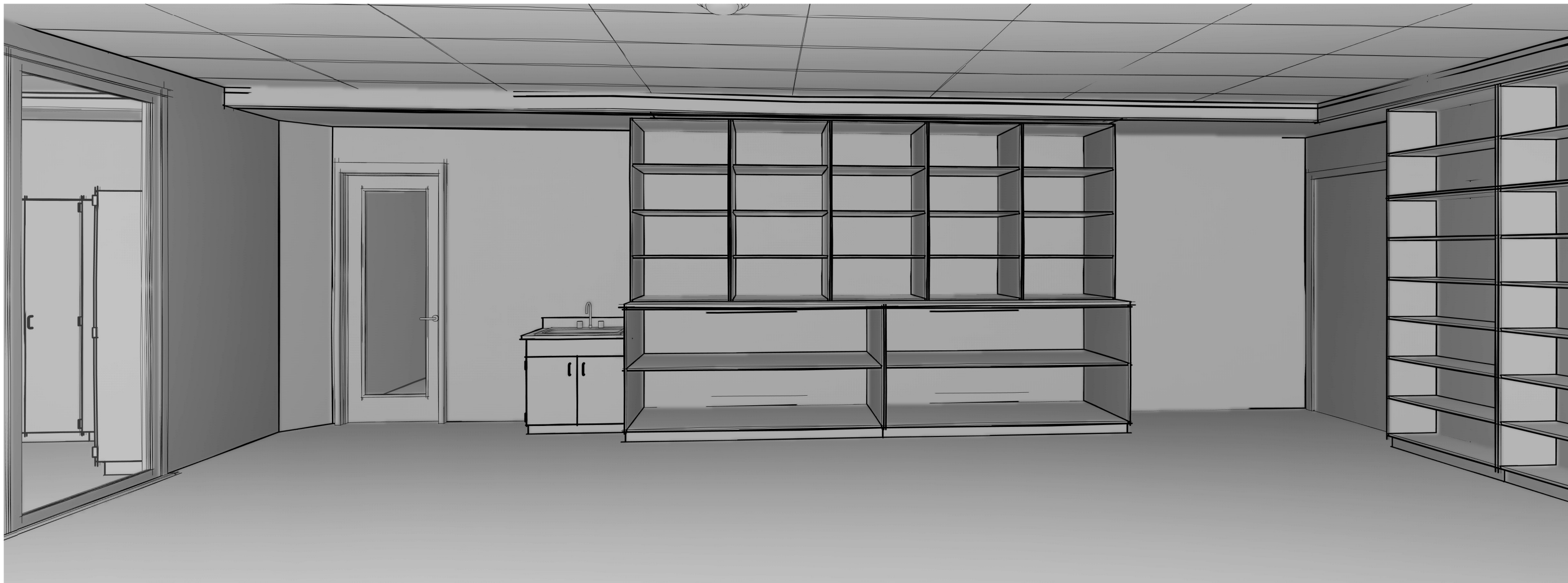
PARADIGM
ARCHITECTURE



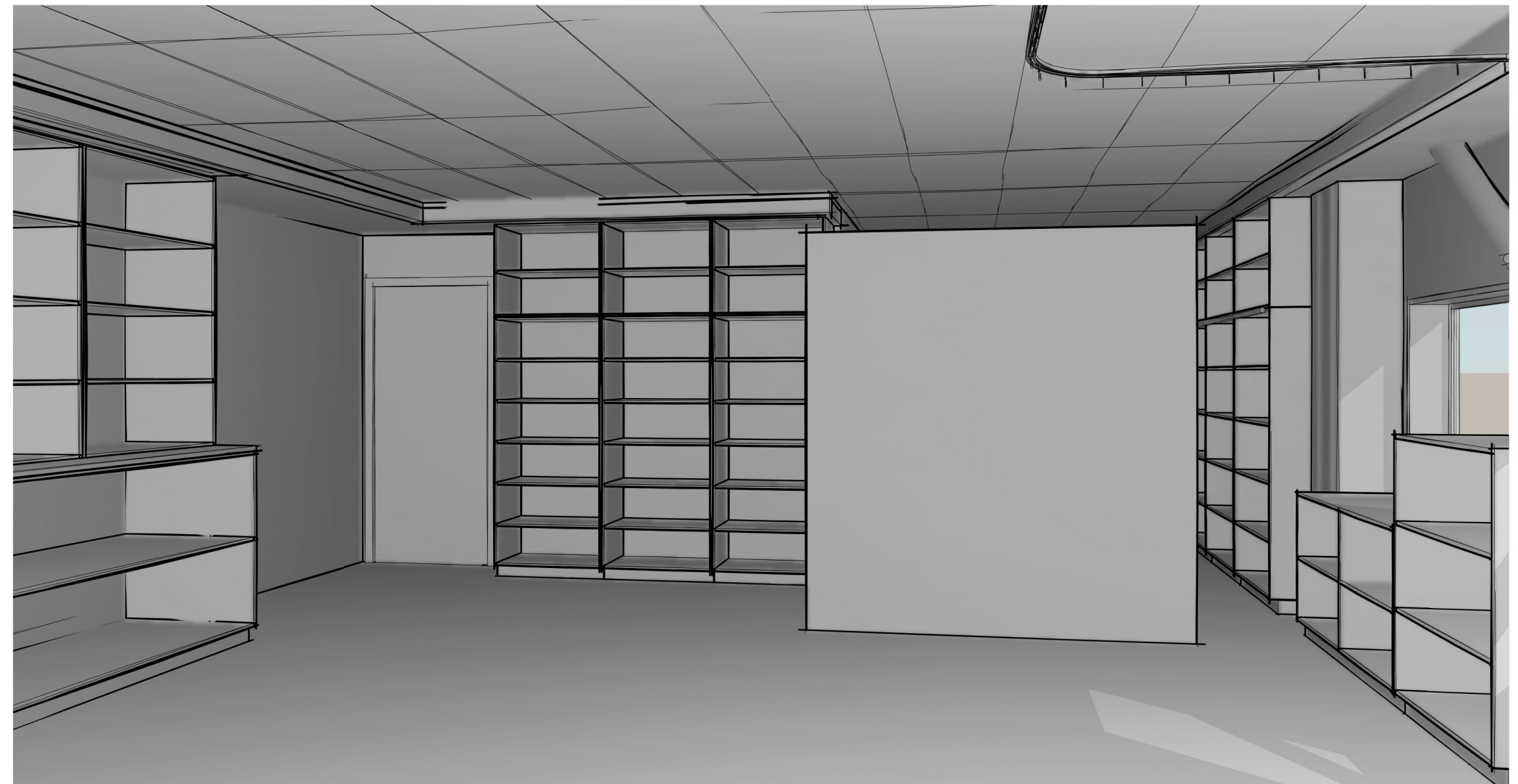
① PROCEDURE LAB - S



② PROCEDURE LAB - W



③ PROCEDURE LAB - N



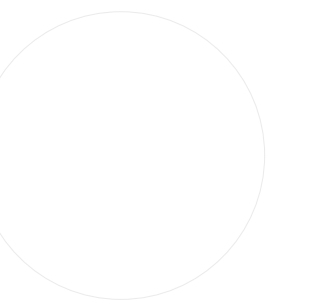
④ PROCEDURE LAB - E



⑤ CADAVER LAB - NE



⑥ CADAVER LAB - NW



PARADIGM
ARCHITECTURE

MISSOULA COLLEGE 4TH FLOOR LAB

1205 E BROADWAY ST, MISSOULA, MT 59802

REVISIONS

11.14.25

PERSPECTIVES

A200

DESIGN DEVELOPMENT